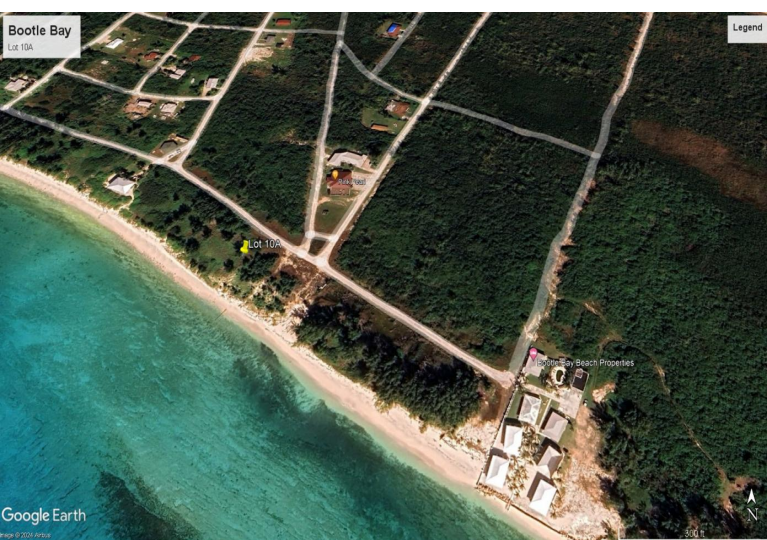


Bootle Bay Beachfront Land



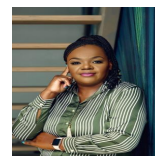
Prime Beachfront Opportunity in Bootle Bay, West Grand Bahama Island!

Discover the perfect canvas for your dream coastal retreat with this exceptional oceanfront lot nestled along the picturesque shoreline of Bootle Bay. Spanning 100 feet of pristine beachfront and boasting 20,000 square feet of pure potential, this property offers an unparalleled setting for development.

Situated in a slowly developing area, this lot enjoys the tranquility of its surroundings while being conveniently close to essential utilities and existing homes. With utilities already accessible in the area, building your ideal spec home is made effortless.

Located just 10 minutes from West End, this location combines serenity with accessibility, ensuring both privacy and convenience. Whether you envision a private getaway or an investment opportunity in this burgeoning coastal communi...read more on our website.

Lot Size: 20,000 sq ft
Maint. Fees: -
Subdivision: West End /
West Grand Bahama
Features: Beach access,
Ocean front



Shelly Gardiner

Phone:

gardinershelly@gmail.com



\$99,000 ID# 53396 [View Online](#)
www.sarlesrealty.com