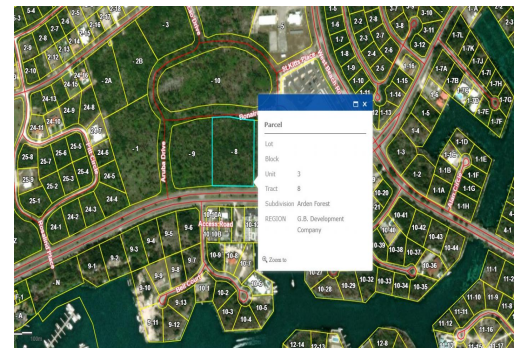
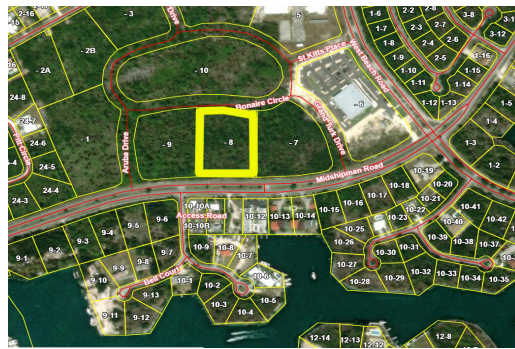


Arden Forest Commercial Opportunity



Nestled in the heart of a bustling area, this expansive 147,232 square foot tract of land,...

Nestled in the heart of a bustling area, this expansive 147,232 square foot tract of land, translating to approximately 3.38 acres, presents a rare opportunity for investors and developers alike. Located on Midshipman Road, near the strategic corner of Midshipman and West Beach Roads, this property boasts not just a central position but also high visibility, making it a coveted piece of real estate....read more on our website.

Lot Size: 3.68
 Maint. Fees: -
 Subdivision: Bell Channel
 Bay Unit



James Sarles

Phone: (242) 727-8888
 jamesarlesrealty@gmail.com



\$0 ID# 52897 [View Online](#)
www.sarlesrealty.com