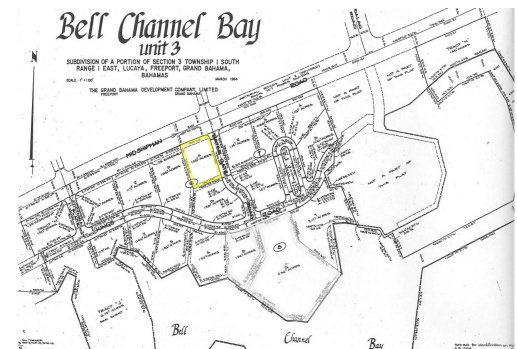
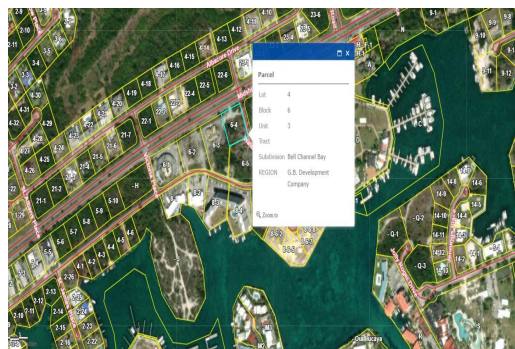
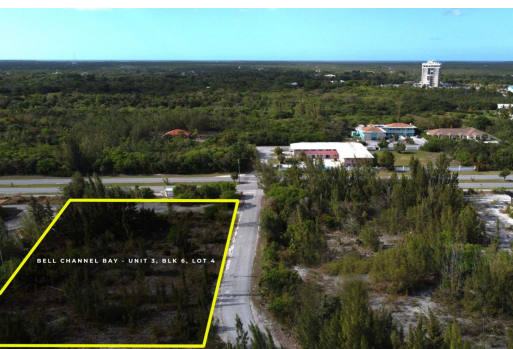


Prime Commercial Property



The property in question, encompassing 44,866.80 square feet of land, is both a commercially viable...

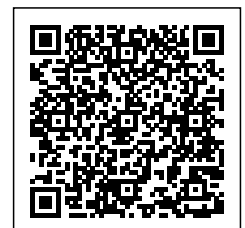
The property in question, encompassing 44,866.80 square feet of land, is both a commercially viable and multi-use space, providing a versatile foundation for a range of development projects. With an acreage of 1.03, it offers ample space for construction, whether for commercial enterprises, mixed-use developments, or even residential complexes. Its location on Midshipman Road adds an additional layer of appeal, suggesting a position that may offer strategic advantages depending on the surrounding infrastructure, accessibility, and community....read more on our website.

Lot Size: 1.03 Acres
 Maint. Fees: -
 Subdivision: Bell Channel Bay Unit



James Sarles

Phone: (242) 727-8888
 jamesarlesrealty@gmail.com



\$418,400 ID# 52895 [View Online](#)
www.sarlesrealty.com