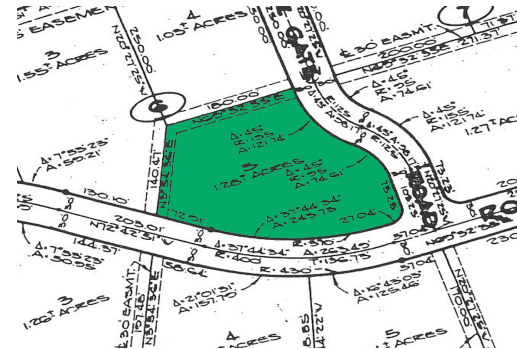
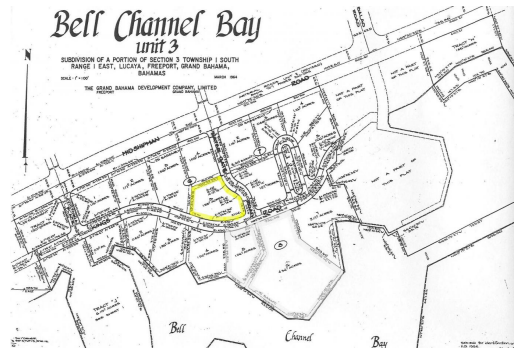
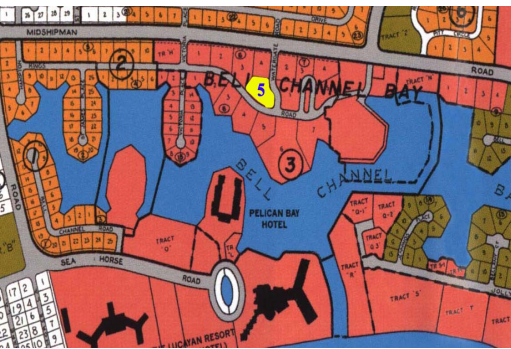


Prime Commercial Property



The versatility of a 1.28-acre parcel, encompassing approximately 55,756.80 square feet, offers a...

The versatility of a 1.28-acre parcel, encompassing approximately 55,756.80 square feet, offers a myriad of opportunities for developers and investors, particularly when zoned for commercial and multi-use purposes. This significant size allows for an ambitious scope of projects, from retail complexes to residential buildings, or a combination of both, which can cater to a diverse array of needs and preferences within a community. The strategic development of such a parcel can serve as a catalyst for local economic growth, attracting businesses, residents, and consumers alike....read more on our website.

Lot Size: 1.28 Acres
Maint. Fees: -
Subdivision: Bell Channel
Bay Unit



James Sarles

Phone: (242) 727-8888
jamesarlesrealty@gmail.com



\$496,500 ID# 52894 [View Online](#)
www.sarlesrealty.com