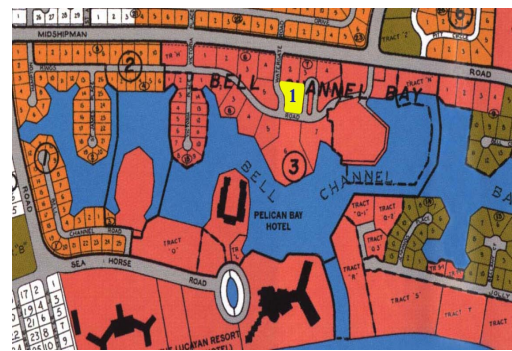
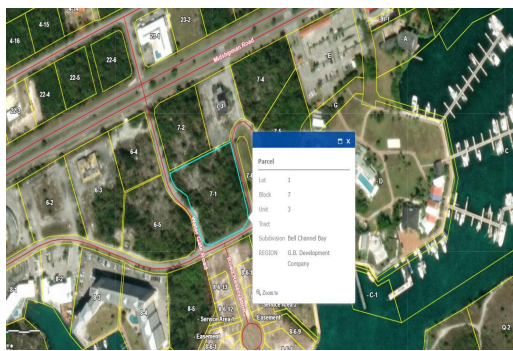
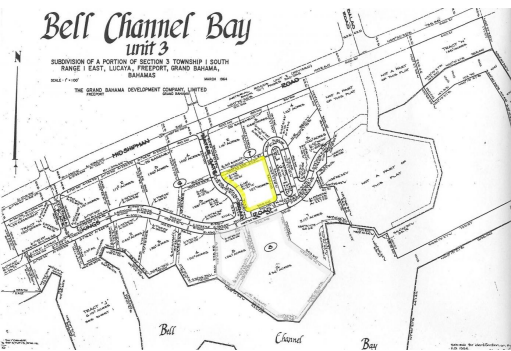
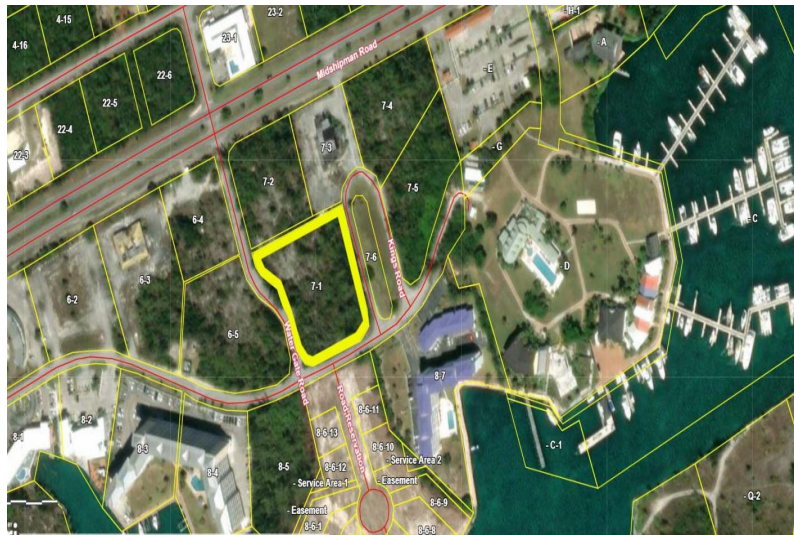
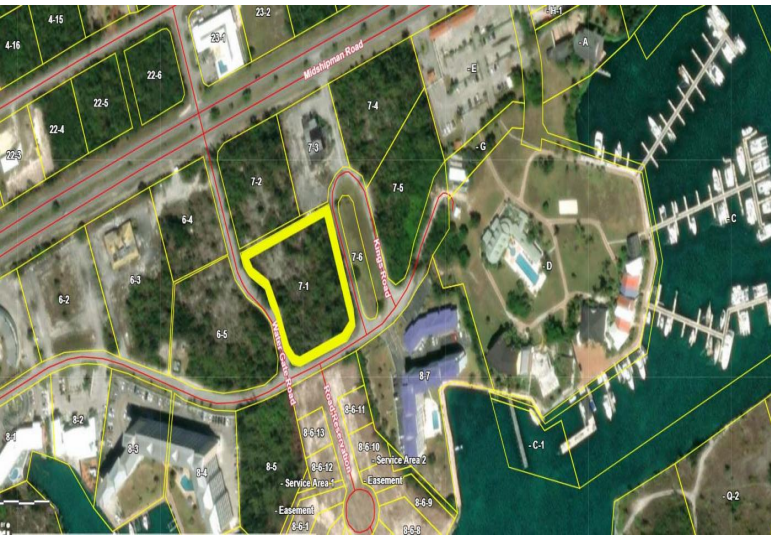


Prime Commercial Property



The property situated off Midshipman Road, on Water Gate Road and Kings Road, presents a...

The property situated off Midshipman Road, on Water Gate Road and Kings Road, presents a significant opportunity for developers and investors looking for a versatile piece of land. Spanning an impressive 1.27 acres, or 55,321.20 square feet, this lot is uniquely positioned to support a variety of commercial and multi-use projects. The multiple access points to the property enhance its value, offering ease of entry and exit from different directions, which is a critical aspect for commercial viability..

Given its considerable size, the land is ideally suited for the development of a mixed-use complex, combining retail, office spaces, and residential units...read more on our website.

Lot Size: 1.27 Acres
 Maint. Fees: -
 Subdivision: Bell Channel Bay Unit



James Sarles

Phone: (242) 727-8888
 jamesarlesrealty@gmail.com



\$367,000 ID# 52893 [View Online](#)
www.sarlesrealty.com