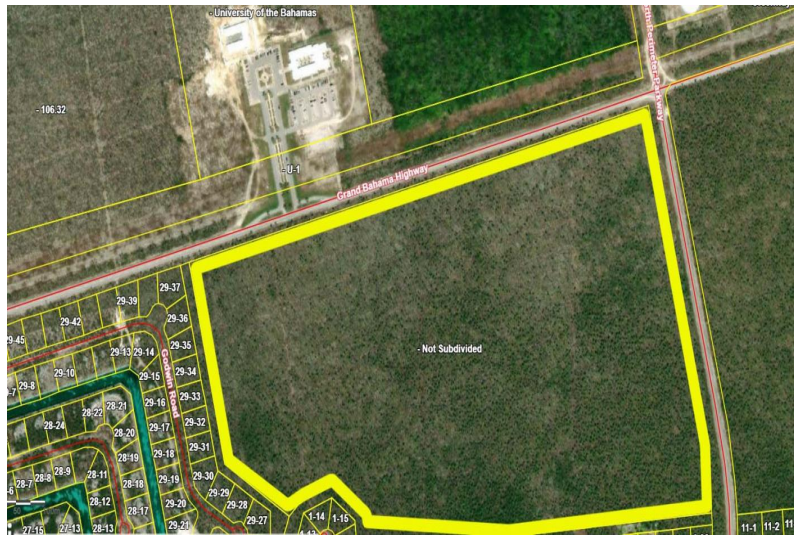
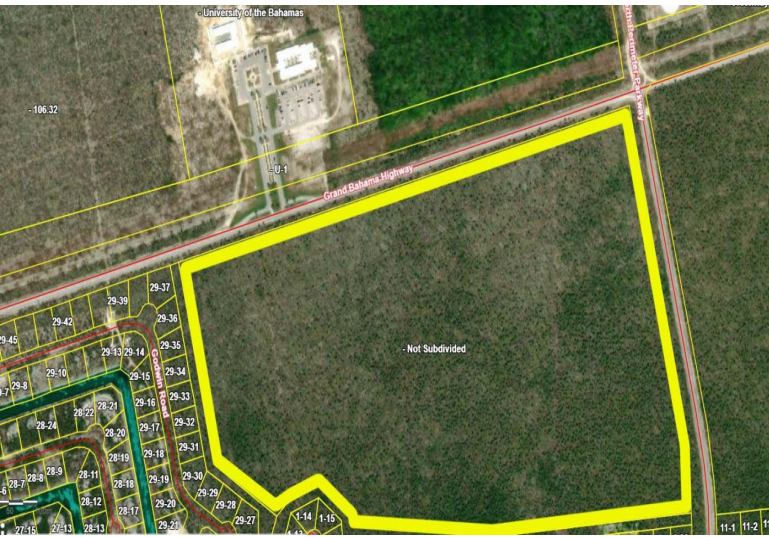


Devonshire 87 Acres



The 87-acre property situated along the Grand Bahama Highway in the Devonshire subdivision presents...

The 87-acre property situated along the Grand Bahama Highway in the Devonshire subdivision presents an unparalleled opportunity for development, given its open zoning status. This expansive tract of land, lying directly opposite the site of the University of the Bahamas, is strategically positioned to capitalize on a variety of development projects ranging from educational facilities, residential communities, to commercial enterprises. The proximity to an institution of higher learning not only enhances the value of the property but also offers a steady influx of potential clientele or residents, depending on the chosen development path.

Additionally, its location near the Carnival Cruise Port augments the property's appeal, positioning it as a prime candidate for tourism-related ventures ...read more on our website.

Lot Size: 87.4 Acres
Maint. Fees: -
Subdivision: Devonshire



James Sarles

Phone: (242) 727-8888
jamesarlesrealty@gmail.com



\$0 ID# 52891 [View Online](#)
www.sarlesrealty.com