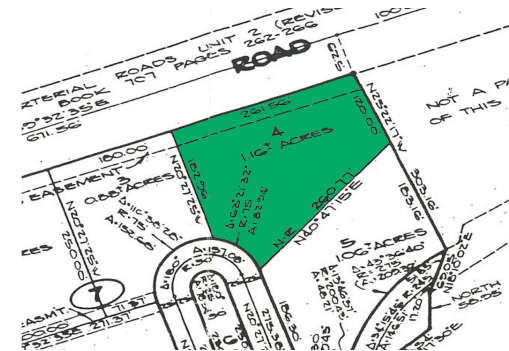
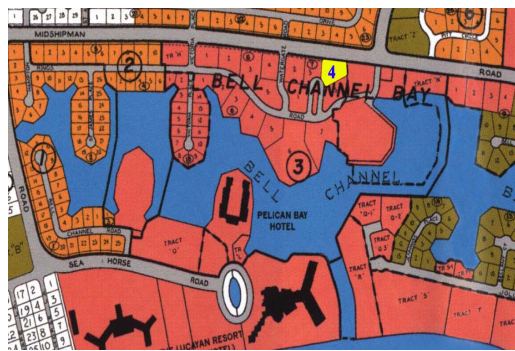
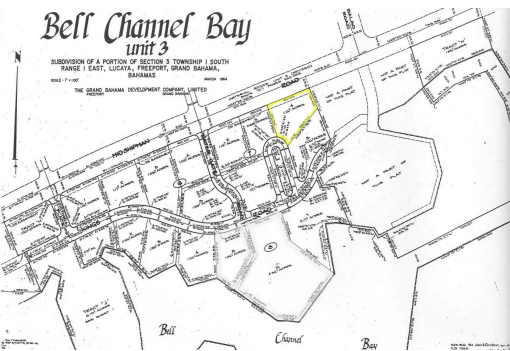


Commercial Land – Prime Location



Prime Commercial Multi Use Land

This lot presents an exceptional commercial and multi-use opportunity that stands out for its strategic location and significant land size. This prime commercial lot, spanning an impressive 1.16 acres or 50,529.60 square feet, offers ample space for a wide range of development projects. Its unique positioning backing onto Midshipman Road enhances accessibility and visibility, making it an attractive site for investors and developers alike....read more on our website.

Lot Size: 1.16
 Maint. Fees: -
 Subdivision: Bell Channel
 Bay Unit



James Sarles

Phone: (242) 727-8888
 jamesarlesrealty@gmail.com



\$475,000 ID# 52890 [View Online](#)
www.sarlesrealty.com