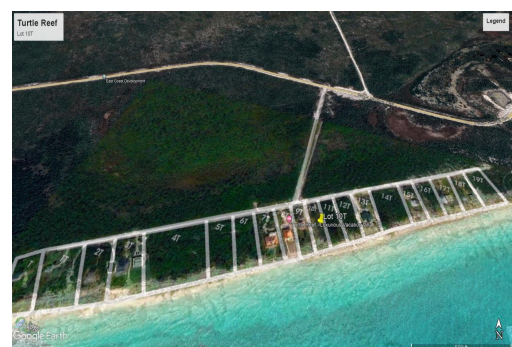


10T Turtle Reef #8211; Beachfront Lot



Beachfront Land on Grand Bahama Island

Prime beachfront land located in the Turtle Reef Subdivision on East Grand Bahama. With 88 feet of waterfront and measuring an impressive 31,276 square feet (0.72 acres), this is a rare opportunity to own a piece of paradise.

The location is perfect, situated just 25 minutes east of Freeport, which means you're close enough to enjoy all the amenities of the city, but far enough away to enjoy peace and tranquility. The open zoning also means that you have the freedom to build your dream home or vacation rental property on the land.

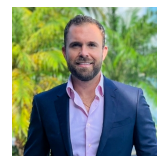
And if you're looking for even more space, the adjacent lot is also available for sale. Don't miss out on this chance to own a piece of one of the most beautiful places on earth. Contact us today for more information....read more on our website.

Lot Size: 31,276 sq ft

Maint. Fees: -

Subdivision: East Grand Bahama

Features: Beach access, Ocean front



Nikolai Sarles

Phone: (242)351-9081
nikolaisarles@gmail.com



\$152,500 ID# 50914 [View Online](#)
www.sarlesrealty.com