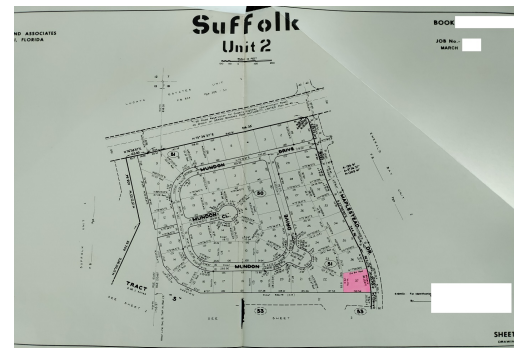


Suffolk Vacant Lot



MOTIVATED SELLER

Located in the peaceful and developing Suffolk subdivision, this vacant lot offers both tranquility and convenience. Its location just south of GB Highway provides quick access to downtown Freeport and the airport, making it ideal for those who value easy commuting. Nature enthusiasts and beach lovers will appreciate the close proximity to the Grand Lucayan Waterway and the renowned beauty of Barbary Beach. With utilities readily available in the area, building your dream home or investment property is a breeze.

Don't miss out on this fantastic opportunity to secure your piece of paradise in Freeport! Contact Ryan Cartwright @ (242) 813-8433 today!...read more on our website.

Lot Size: 18,197 sq ft (.42 acres)

Maint. Fees: \$589 /yearly

Subdivision: Suffolk



Ryan Cartwright

Phone:

rscartwright242@gmail.com



\$26,000 ID# 49685 [View Online](#)
www.sarlesrealty.com