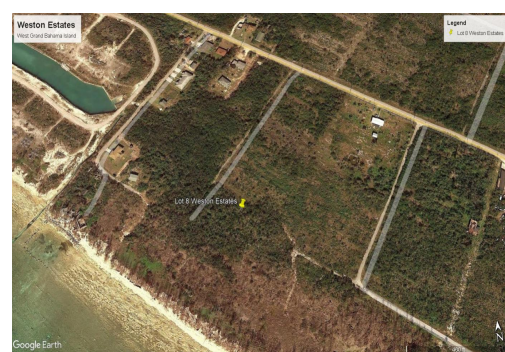
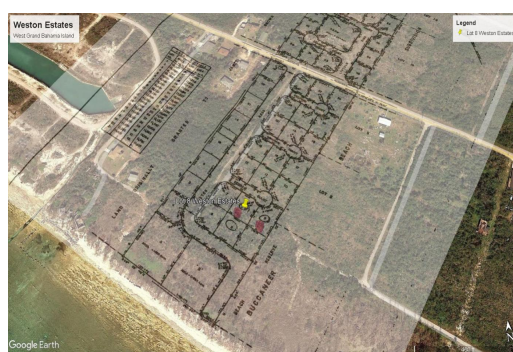
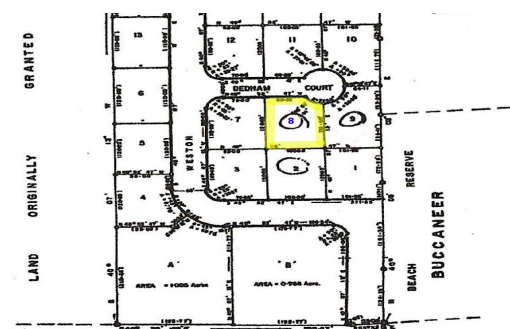
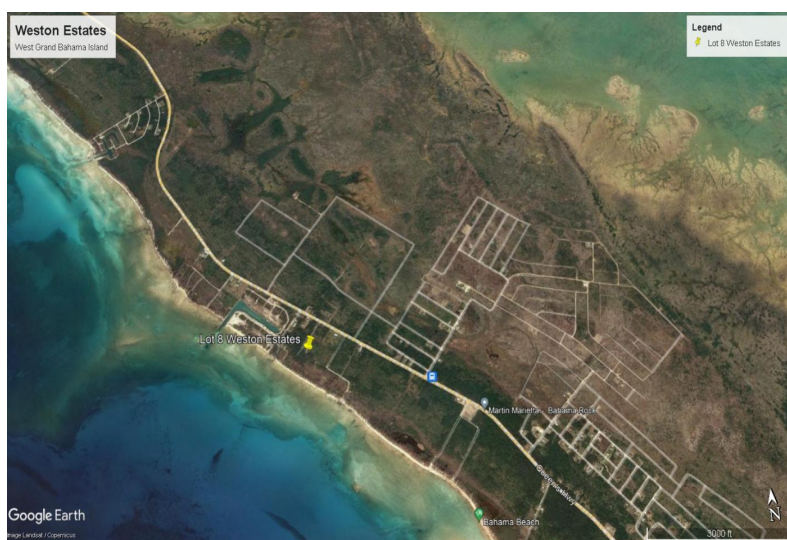
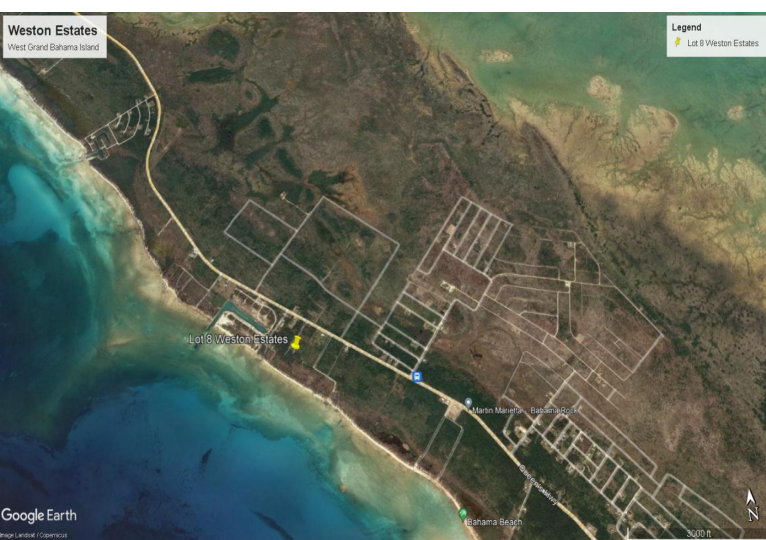


# 8 Weston Estate &#8211; Deadman&#8217;s Reef



## Open Zoning - Adjacent lot also Available for sale!

These lots are ripe for development. Located in the western end of Grand Bahama are 2 properties open for pretty much anything. Close to the water, these lots would suit anyone who wants seclusion or to not be a part of the hustle and bustle. Rest here in west end the best end!...read more on our website.

Lot Size: 11,608 sq ft  
 Maint. Fees: -  
 Subdivision: Deadmans Reef  
 Features: Beach access



James Sarles

Phone: (242) 727-8888

[jamesarlesrealty@gmail.com](mailto:jamesarlesrealty@gmail.com)



**\$12,000 ID# 48655** [View Online](#)  
[www.sarlesrealty.com](http://www.sarlesrealty.com)