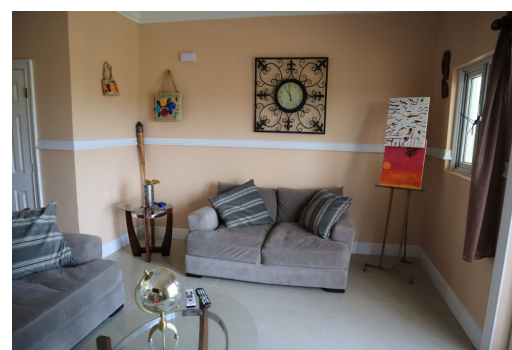
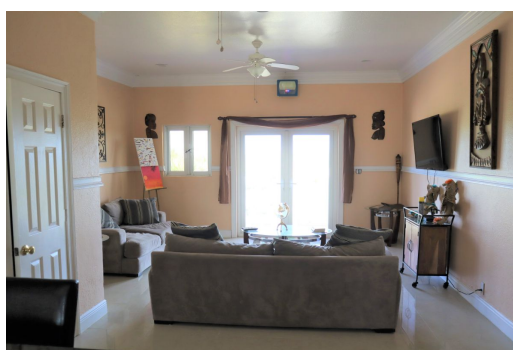


MODERN BEACH HOUSE IN THE EAST



ENJOY GREAT MEMORIES IN THIS BEACHFRONT HOME

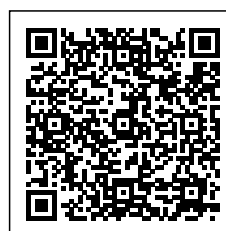
This beautiful house has a private road that leads to spectacular views of the beach and the tranquility of East End. The house sits on 14 foot Pilings and the walls are solid concrete with reinforced steel. The house is 2400 square feet on a 2 acre property. It features a metal roof, and impact resistant windows and doors. Inside this tastefully designed home are 11 ft. ceilings porcelain tiles, chair rails and crown molding. The Master Bedroom is on the Eastern side of the house and is large with a spa like master bath complete with a jet tub and separate shower. The other two bedrooms each have an en-suite bath, and there is also a half bath. The Living Room Kitchen and bathroom has an open floor plan with lots and light and fresh air if needed. although there are split Ac Units through....read more on our website.

Bedrooms: 3
Bathrooms: 3.5
Lot Size: 2 Acres
Living Area: 2400
Maint. Fees: 100
Subdivision: East Grand Bahama
Features: Beach access, Furnished, Ocean front, Turnkey



Dwayne King

Phone: (242)441-3877
dwaynekingssales@gmail.com



\$650.000 ID# 47726 [View Online](#)
www.sarlesrealty.com