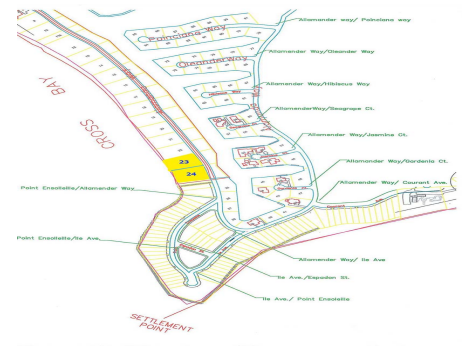
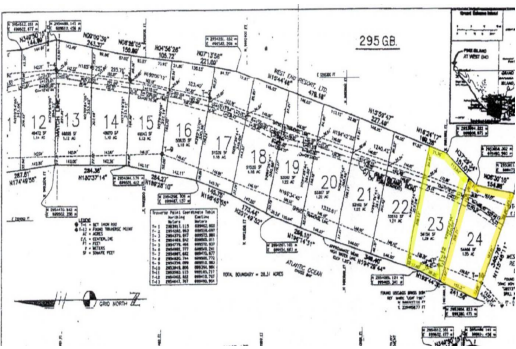


Pine Island Double Lots



Pine Island Doub Lots

The 150 acres that make up Old Bahama Bay have been designed to include everything you want in a tropical paradise. Old Bahama Bay has an oceanfront resort with 47 open suites, a 200-slip marina, and a new customs House featuring fine dining with panoramic views on the second floor and an indoor-outdoor lounge on the first level. There are many outstanding features that make Old Bahama Bay an ideal choice for your second residence or vacation home. And if you're a yacht owner, you'll truly appreciate that every home site has its own private dock. The most amazing area of Old Bahama Bay is Pine Island. Each of the 24 one-acre lots on this site offers 145 feet of ocean front 145 of dockage along a private 8 foot deep canal....read more on our website.

Lot Size: 2.5 Acres
 Maint. Fees: \$868 Monthly
 Subdivision: West End /
 West Grand Bahama



Shelly Gardiner
 Phone:
 gardinershelly@gmail.com



\$1,400,000 ID# 47246 [View Online](#)
www.sarlesrealty.com