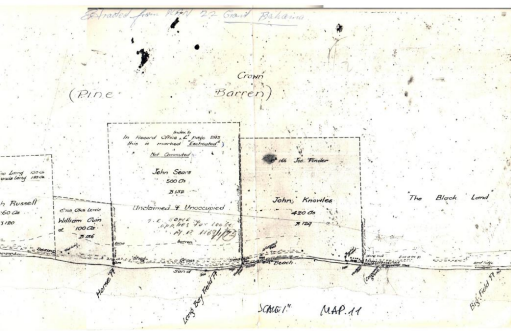
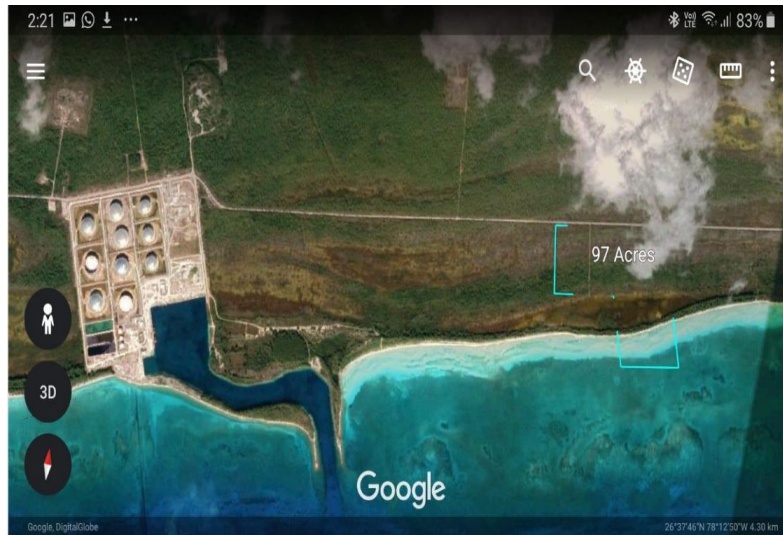
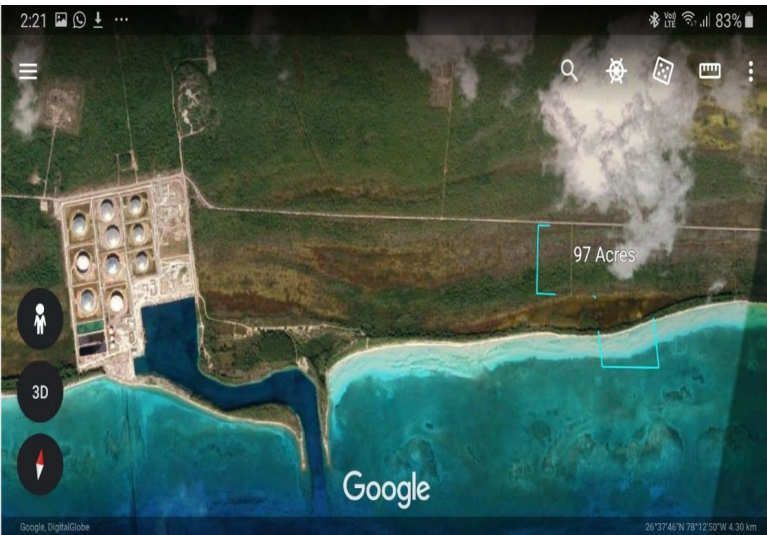


97 Acres on a Beautiful Beach



97 acres , part of 500 acre John Sears Tract- beautiful beachfront property with open zoning and...

97 acres , part of 500 acre John Sears Tract- beautiful beachfront property with open zoning and 1075 ft feet of the oceanfront! Past the Oil terminal. With the cruise port being built, it is a gr4eat investment at a more than a reasonable price! Priced for a quick sale!

Dimensions are

Beginning at the N.E. corner of the S.E. quarter thence running in a westerly direction for 2,375 feet to a point thence southerly 1,140 feet to a point, thence easterly 1,300 feet to a point, thence 1,200 feet south to the sea, thence easterly along the coastline 1,075 feet to a point, thence 2,340 feet to the point of the beginning....read more on our website.

Maint. Fees: *
Subdivision: East Grand Bahama
Features: Beach access



Ina Simmons

Phone:

inasimmons@gmail.com



\$925,000 ID# 34945 [View Online](#)
www.sarlesrealty.com