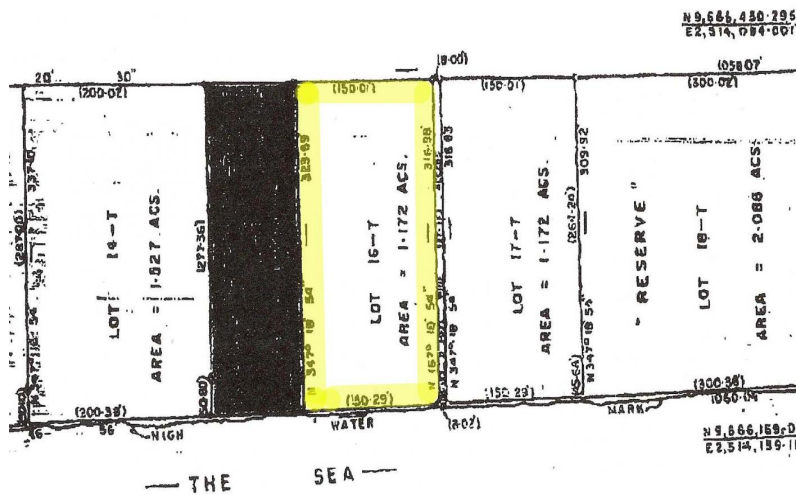
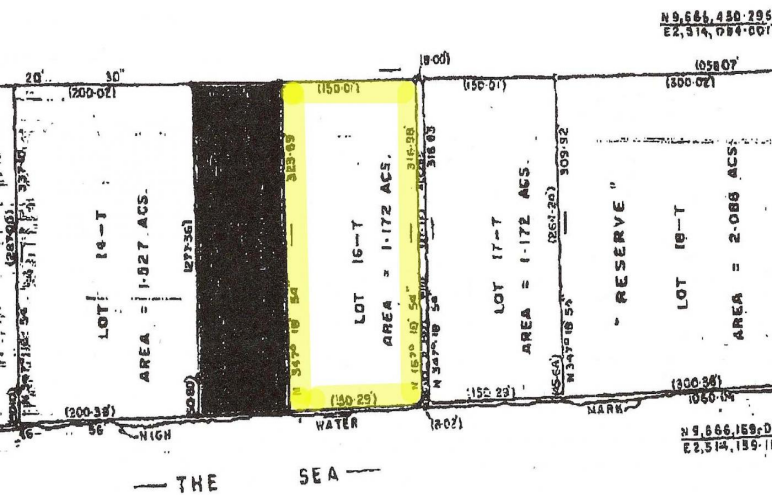


# Turtle Reef Vacant Land



## Beach front land situated in East Grand Bahama, Turtle Reef Subdivision.

This beach front land located on East Grand Bahama in the Turtle Reef Subdivision is about 25 minutes east of Freeport. Lot boasts 150 feet of beachfront. Turtle Reef is a developing area and features some of the most gorgeous single family homes. The property has open zoning.....read more on our website.

Lot Size: 1.17 Acres  
Maint. Fees: -  
Subdivision: Turtle Reef  
Features: Beach access



James Sarles

Phone: (242) 727-8888

jamesarlesrealty@gmail.com



**\$299,000 ID# 10371** [View Online](#)  
[www.sarlesrealty.com](http://www.sarlesrealty.com)