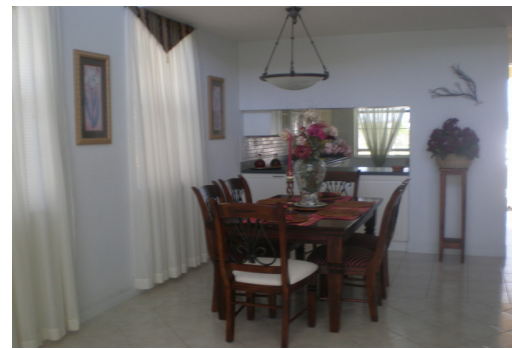


Exceptional Canal Front Rentals



Exceptionally well managed and maintained rental apartments with canal views and dockage- 1, 2 and...

Emerald Bay Condominium Development is situated off Pinta Avenue in Bahamia Subdivision, just 5 minute walk from white sandy beach and 4 minute car ride to the downtown area. Very well maintained and managed turn key apartments' standard is hard to impossible to beat, with beautifully landscaped gardens, pool and Jacuzzi outdoors, sparkling canal views as well as tastefully furnished interiors, that are not only comfortable but luxurious - all for a reasonable monthly price. One bedroom units are rented for \$900, two bedroom- \$1600, three bedroom, townhouse style with split level floor plan,- \$2300 monthly. Each unit enjoys high ceilings, polished interior highlights and a sizable limestone patio with a great view. Truly exceptional residence. Call Ina today for an appointment to view....read more on our website.

Bedrooms: 1
Bathrooms: 1
Living Area: 1100
Maint. Fees: n/a
Subdivision: Bahamia
Features: Canal Front,
Dock, Furnished,
Garden, Gated, Pool



Ina Simmons

Phone: (242)727-0707
inasimmons@gmail.com



\$900 ID# 7504 View Online
www.sarlesrealty.com