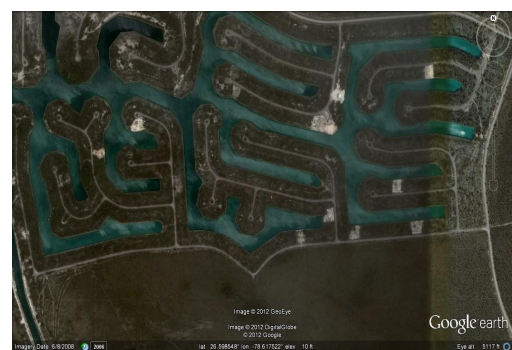
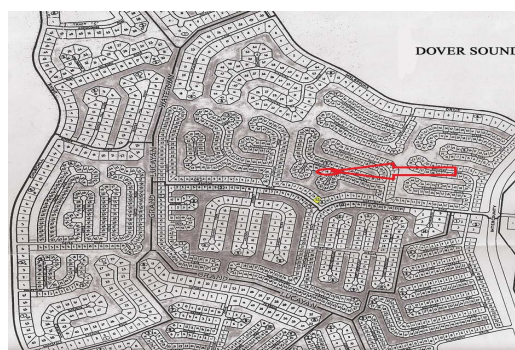
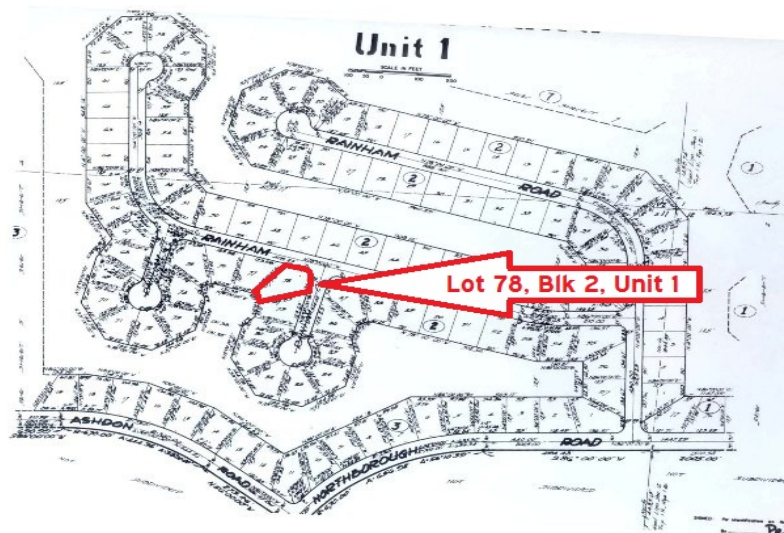
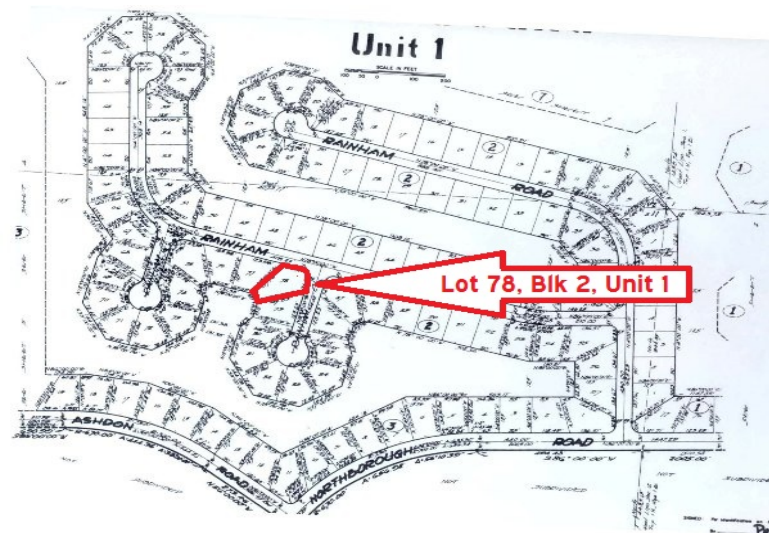


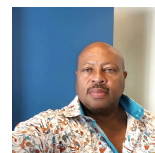
Dover Sound Canal Lot



Corner Dover Sound Lot

This Corner lot in Dover Sound has 36' on the canal and offers a water view, and low annual Service Charge fees.....read more on our website.

Lot Size: 13,716 sq ft
 Maint. Fees: \$ 130 Per
 Year
 Subdivision: Dover Sound
 Features: Canal Front



Dwayne King

Phone: (242)441-3877

dwaynekingsales@gmail.com



\$30,000 ID# 7374 [View Online](#)
www.sarlesrealty.com