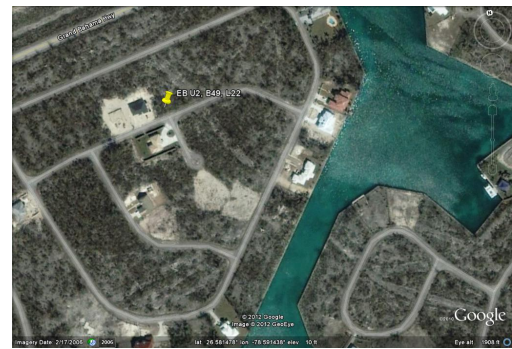


# Emerald Bay Vacant Land



## Great deal in quiet area!

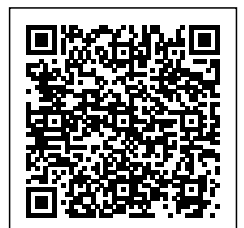
This Emerald Bay single family lot is situated just over the Casuarina Bridge and is located on Mundon Avenue. Emerald Bay is a very quiet neighborhood, consisting of moderately sized homes perfect for raising a family. This subdivision is just a few minutes away from Port Lucaya Marketplace, the International Airport and the College of the Bahamas.....read more on our website.

Lot Size: 125 x 100  
Maint. Fees: \$450/year  
Subdivision: Emerald Bay



James Sarles

Phone: (242) 727-8888  
jamesarlesrealty@gmail.com



**\$25,000 ID# 7210** [View Online](#)  
**[www.sarlesrealty.com](http://www.sarlesrealty.com)**