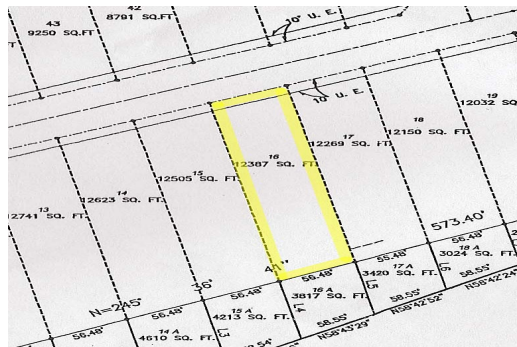
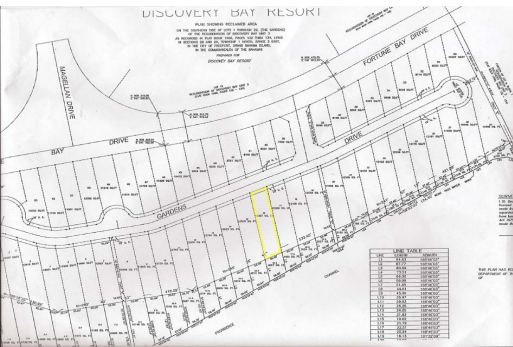
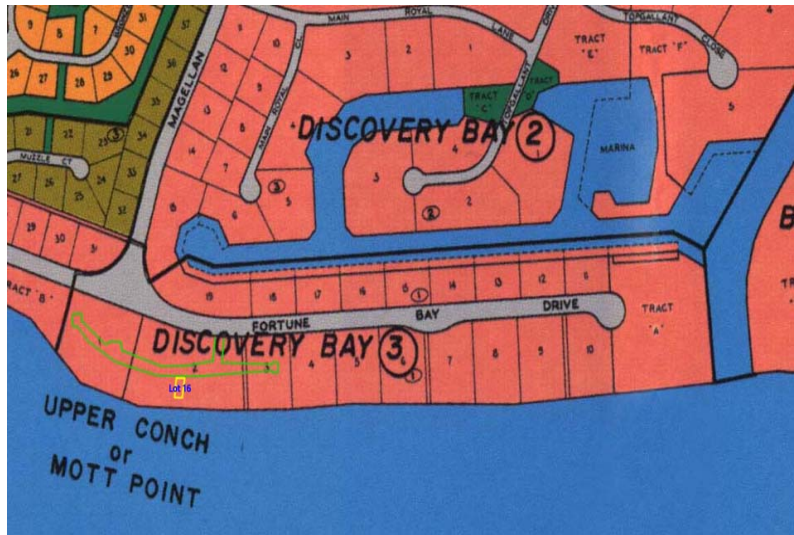
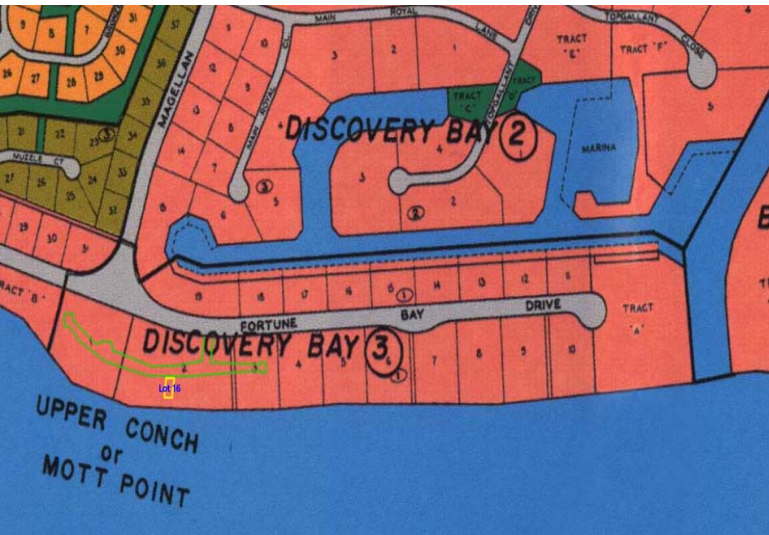


Discovery Bay Property #8211; Lot #16



Located in the exclusive gated resort development of Discovery Bay, this magnificent beachfront...

Located in the exclusive gated resort development of Discovery Bay, this magnificent beachfront home-site affords priceless views of the beautiful turquoise waters of Grand Bahama Island.

The Gardens at Discovery Bay is a private enclave of oceanfront lots. Lot 16 is measured at 12,387 square feet .

There is a planned marina conveniently within the development just adjacent to these properties which will offer dockage to owners with boats or visiting guests. The Port Lucaya Market Place and three popular golf courses are less than a ten-minute drive....read more on our website.

- Lot Size: 12,387
- Maint. Fees: No charges to date.
- Subdivision: Discovery Bay
- Features: Beach access, Gated



James Sarles

Phone: (242) 727-8888

jamesarlesrealty@gmail.com



\$350,000 ID# 6922 [View Online](#)
www.sarlesrealty.com