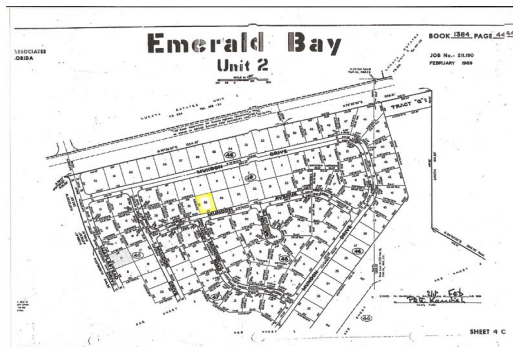
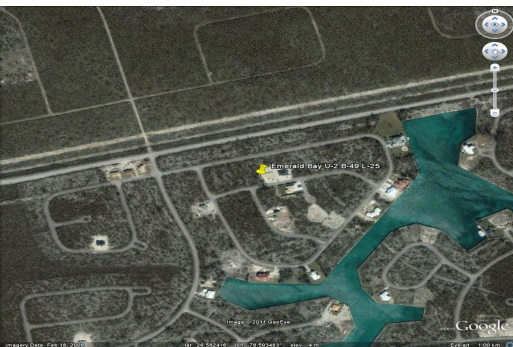


# Emerald Bay-Single Family



**This Emerald Bay single family lot is situated just over the Casuarina Bridge and is located on...**

This Emerald Bay single family lot is situated just over the Casuarina Bridge and is located on MUNDON AVENUE. Emerald Bay is a very quiet neighborhood, consisting of moderately sized homes perfect for raising a family. This lot is just minutes away from Port Lucaya Marketplace, International Airport, City Market and School district....read more on our website.

Lot Size: 12,50 sq ft  
 Maint. Fees: -  
 Subdivision: Emerald Bay



James Sarles

Phone: (242) 727-8888  
 jamesarlesrealty@gmail.com



**\$29,000 ID# 5758 View Online**  
[www.sarlesrealty.com](http://www.sarlesrealty.com)