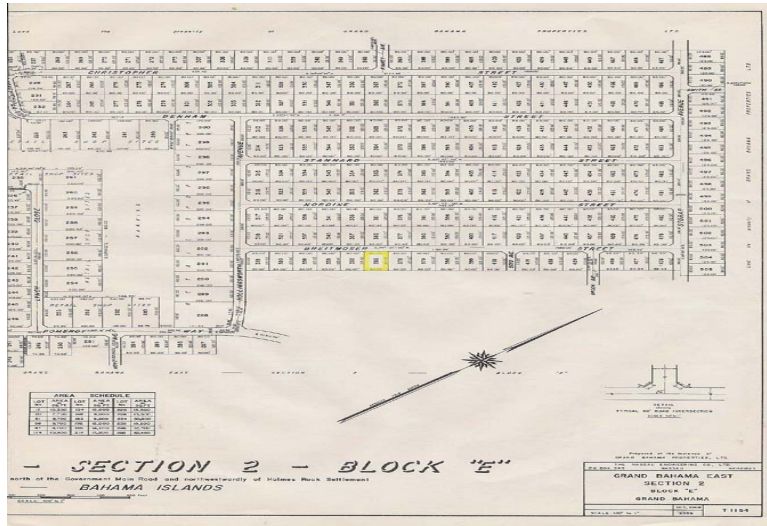
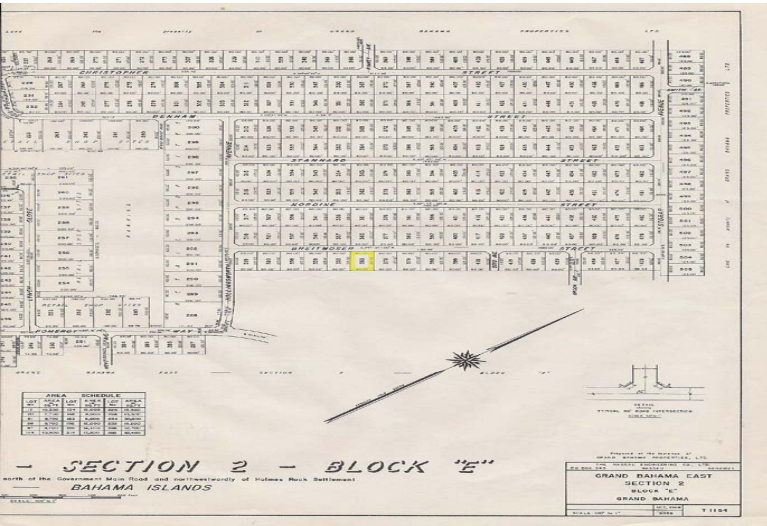
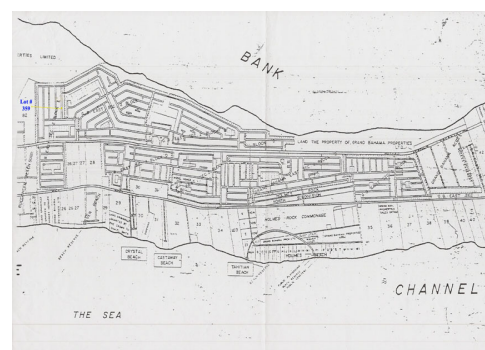
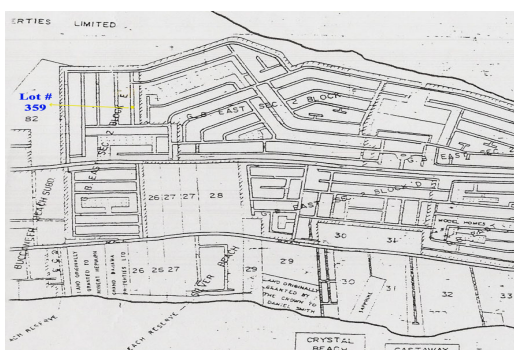


G. B. East Vacant Land



NORDINE										1485.00'
322	336	341	356	361	376	381	396	401		80.00'
80.00'	80.00'	80.00'	80.00'	80.00'	80.00'	80.00'	80.00'	80.00'	80.00'	80.00'
80.00'	80.00'	80.00'	80.00'	80.00'	80.00'	80.00'	80.00'	80.00'	80.00'	80.00'
BREITMOSE										1190.00'
320	338	339	358	359	378	379	398	399		80.00'
80.00'	80.00'	80.00'	80.00'	80.00'	80.00'	80.00'	80.00'	80.00'	80.00'	80.00'
80.00'	80.00'	80.00'	80.00'	80.00'	80.00'	80.00'	80.00'	80.00'	80.00'	80.00'



The property located in G. B. East Section includes two single family lots and lies to the west of...

The property located in G. B. East Section includes two single family lots and lies to the west of Freeport. This subdivision is located in the western end of the island and is situated between Eight Mile Rock settlement and West End, Grand Bahama. The area has some development and is approximately 20 minutes away from Downtown Freeport and mere minutes away from West End.

This Lot is measured at 10,000 square feet. Those of you familiar with Grand Bahama know that West End is home to the major development of Old Bahama Bay and Ginn Sur Mer. In addition there are also other lovely developments going up and another example of this is the Seaward Development. With all the growth that is anticipated in the western end of Grand Bahama this will make a great investment property especially at ...read more on our website.

Lot Size: 10,000 sq. ft.
 Maint. Fees: -
 Subdivision: Holmes Rock



James Sarles
 Phone: (242) 727-8888
 jamesarlesrealty@gmail.com



\$4,900 ID# 5713 [View Online](#)
www.sarlesrealty.com