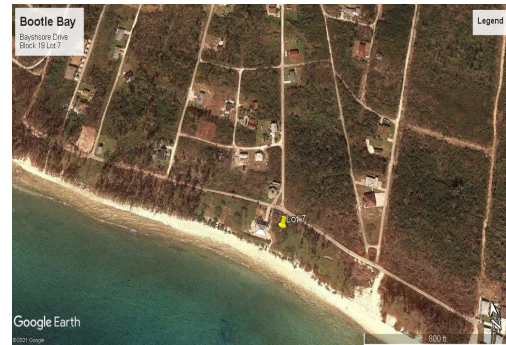
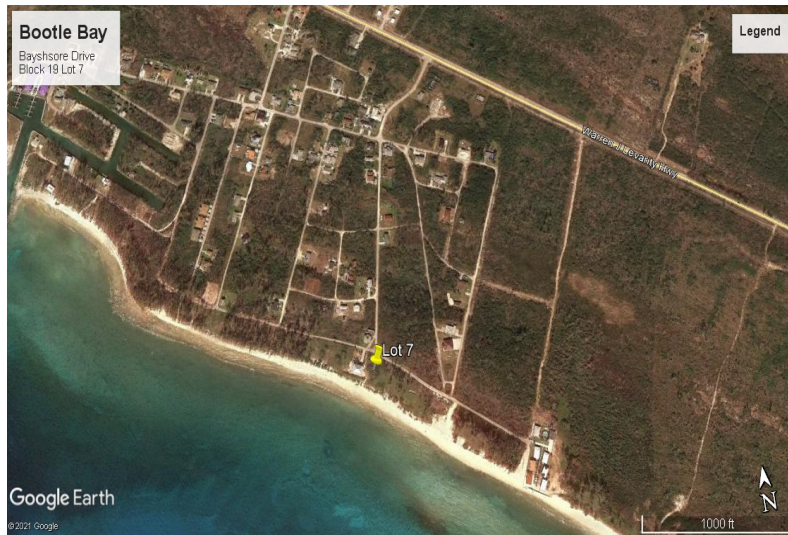
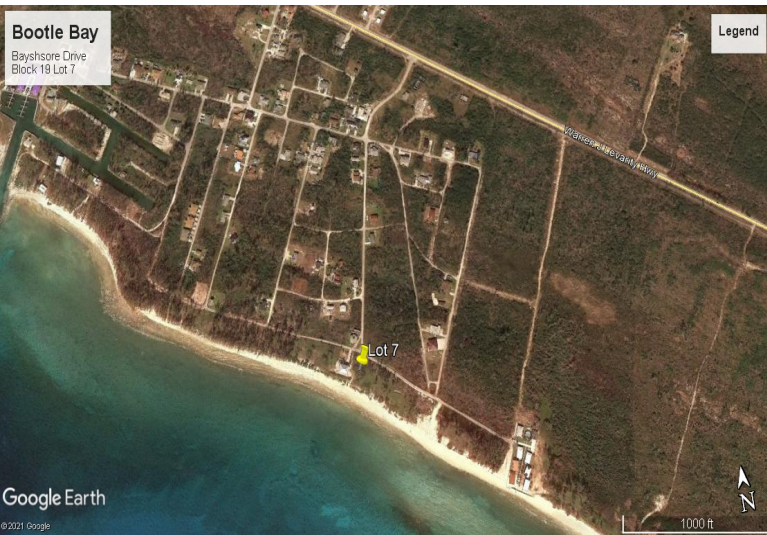


# Bootle Bay Beachfront Land



**Located along the shoreline in Bootle Bay, this beach front lot is ripe for development. Utilities...**

...read more on our website.

Lot Size: 20,400sqft

Maint. Fees: -

Subdivision: West End /

West Grand Bahama

Features: Beach access,

Ocean front



James Sarles

Phone: (242) 727-8888

[jamesarlesrealty@gmail.com](mailto:jamesarlesrealty@gmail.com)



**\$165,000 ID# 5574 [View Online](#)**  
**[www.sarlesrealty.com](http://www.sarlesrealty.com)**