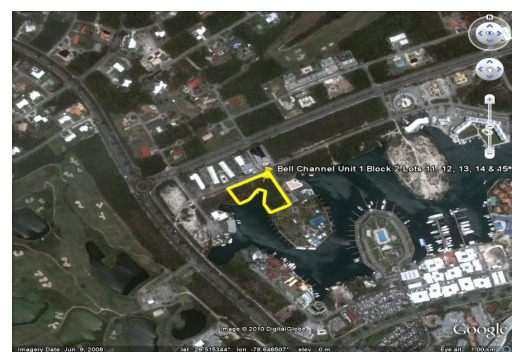
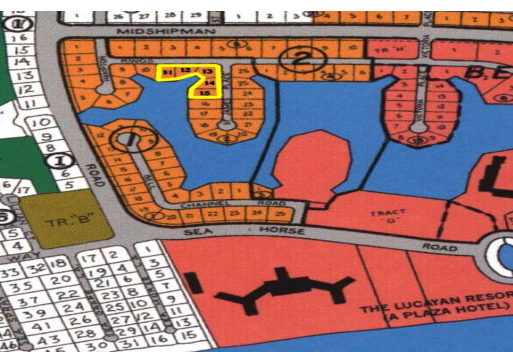


Bell Channel Bay Commercial Lots



Fantastic Commercial Property.

Fantastic multi-family property situated in the popular Bell Channel Bay area. This property is nestled away boasting over 500 ft. on the canal and 175 ft. deep from canal to road. This property is located off King's Road and St. James Place and is ideal for a development with condos and rental units. It is located within minutes from Port Lucaya Marketplace, Westin and Sheraton Hotels, Casino, Reef Golf Course and the beaches. Rare opportunity! Priced to sell!...read more on our website.

Lot Size: 84,200 sq ft.
 Maint. Fees: -
 Subdivision: Bell Channel Bay Unit
 Features: Canal Front



James Sarles

Phone: (242) 727-8888

jamesarlesrealty@gmail.com



\$750,000 ID# 5567 [View Online](#)
www.sarlesrealty.com