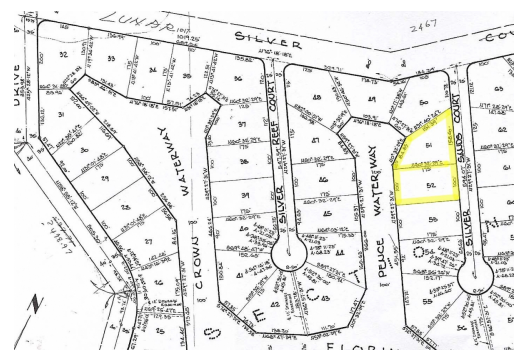
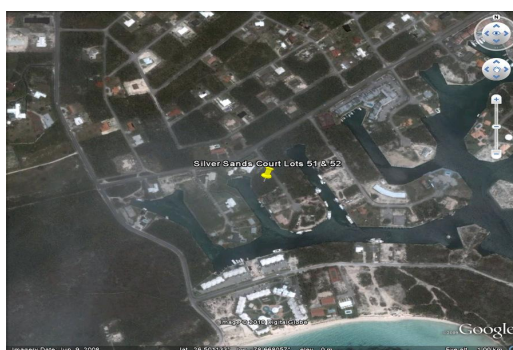
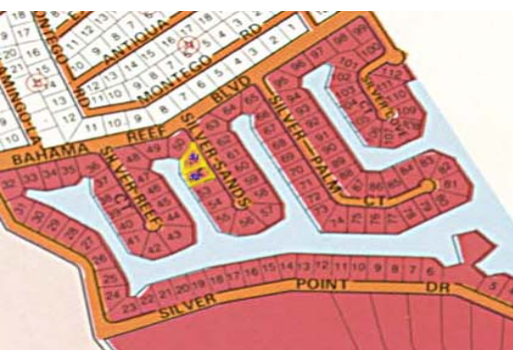
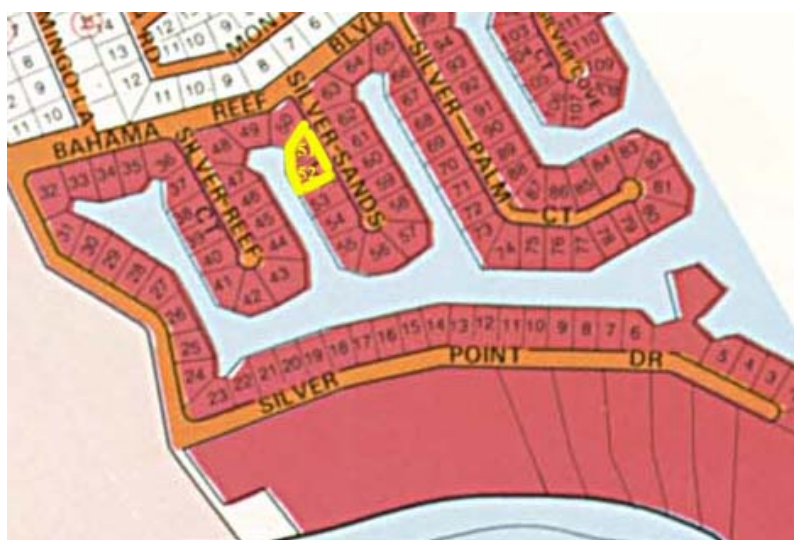
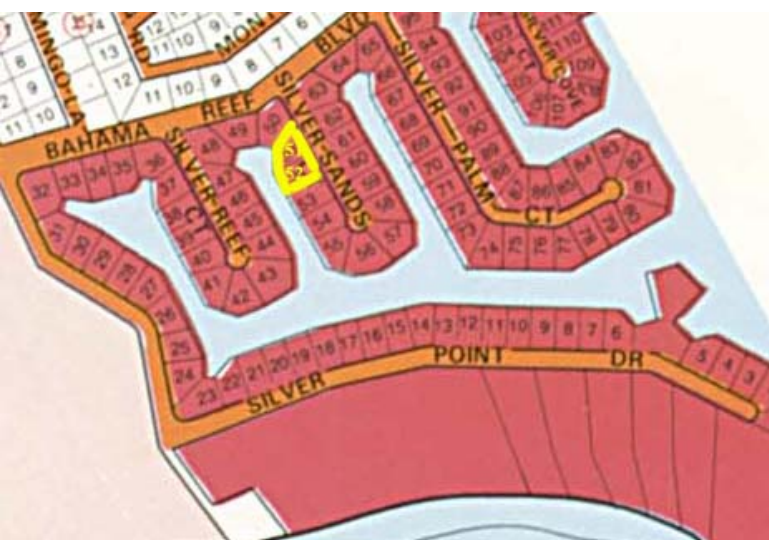


Silver Cove Lot



These canal lots are located in the popular and highly sought after Silver Cove subdivision....

These canal lots are located in the popular and highly sought after Silver Cove subdivision. Together, these lots offer approximately 190½ of canal frontage and are zoned Tourist Commercial. These lots are centrally located and just minutes away from the Grand Bahama Domestic & International airports and are in walking distance to several beautiful pristine beaches. The Port Lucaya Marketplace with marina & casino,

Downtown Freeport, the financial district and Supreme and Magistrates courts are all no more than a 10 minute drive away. Together these lots measure over 38,000 square feet and zoning for these lots allows for the development of anything from a simple home to small resort, villas, restaurants, or a grand multi-family income producing complex. Ideally this property has endle...read more on our website.

Lot Size: 38,316 sq ft
Maint. Fees: -
Subdivision: Silver Cove
Features: Canal Front



James Sarles

Phone: (242) 727-8888

jamesarlesrealty@gmail.com



\$369,000 ID# 5533 [View Online](#)
www.sarlesrealty.com

Ph: (242) 351-9081 | Web: www.sarlesrealty.com