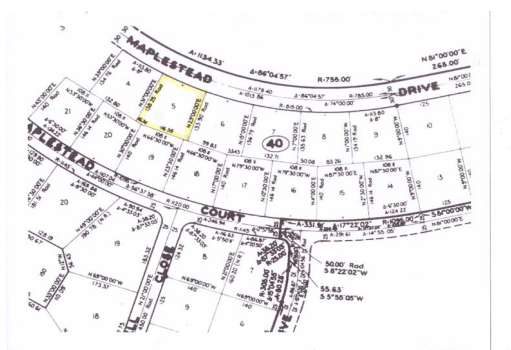
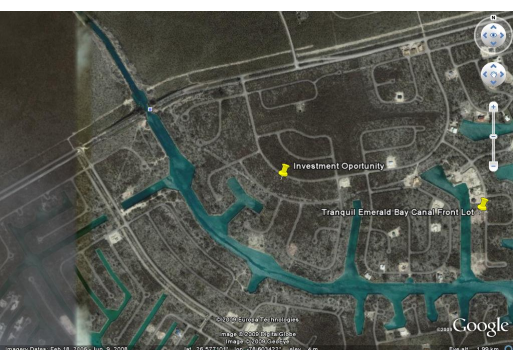
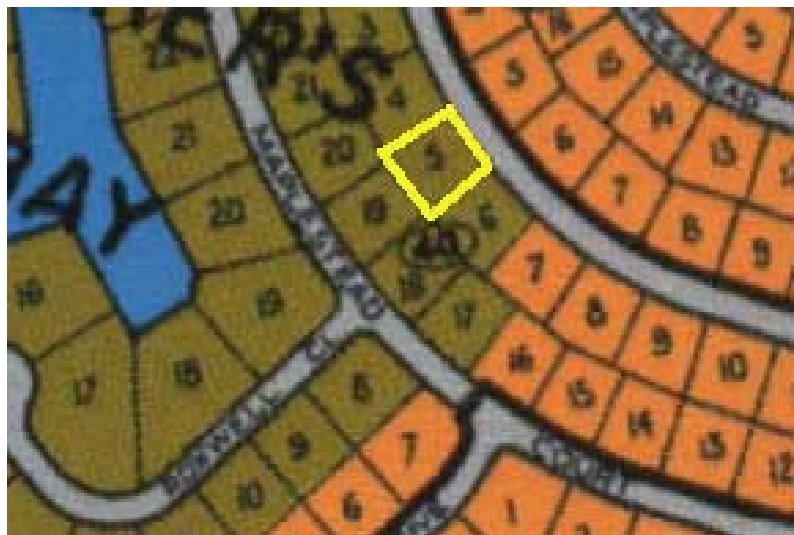


Excellent Opportunity for Investment



Investment Opportunity

Zoned high rise multi- family and priced lower than the properties around this lot of land is a great investment. Zoning allows for anything from a single family home to a multi- story apartment complex. Located in a quiet and growing neighborhood this sizable Explorer's Bay lot is very near the Grand Lucayan Waterway canal system. The sparkling waterway views would be spectacular, especially from a multi- level structure's upper floors. Make an offer today!...read more on our website.

Lot Size: 16,787 sq. ft.
Subdivision: Explorer's Bay



Ina Simmons

Phone: 242-727-0707
inasimmons@gmail.com



\$59,000 ID# 5143 [View Online](#)
www.sarlesrealty.com