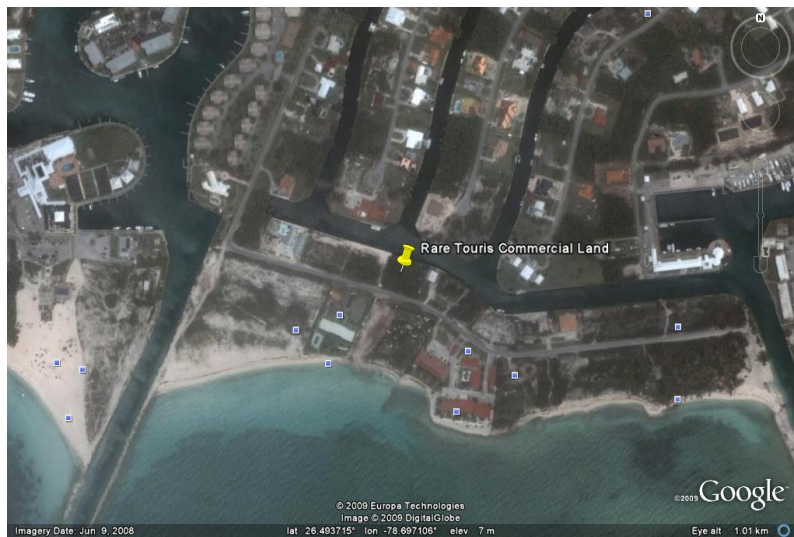
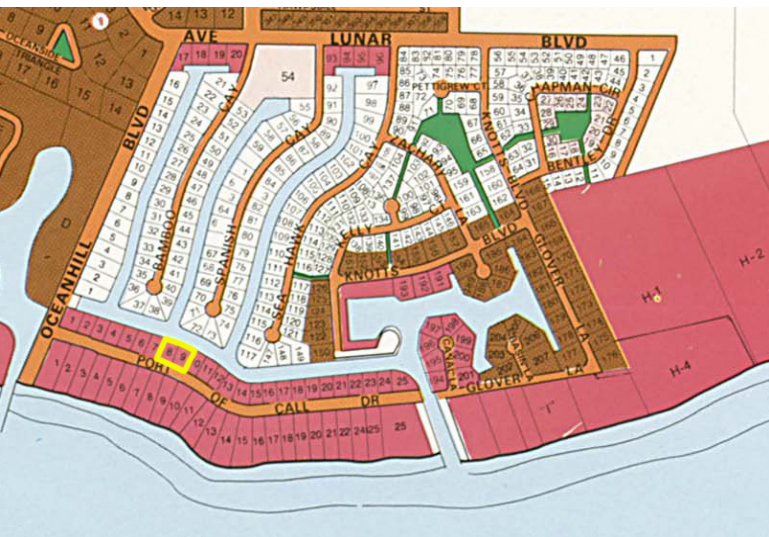


Two Adjacent Canal Lots across from the Ocean



Own these tourist commercial zoned waterfront side by side lots across from the ocean, priced to sell

These two adjacent tourist commercial canal front lots could offer a stunning view of the ocean from a future several story structure. Knowledgeable investors will recognize the potential value of these lots for the building of complex commercial projects, apartment buildings, or residential structures. Located in the Bahama Terrace and Country Club Subdivision, the lots are nearby a highly successful developed gated community called the Port Of Call Villas. In addition, the lots back up to the Port Of Call Drive which offers great access to necessary transportation. Both lots can be purchased separately. ...read more on our website.

Lot Size: 30,000 sq. ft.
Maint. Fees: \$180
annually, \$90 per each lot
Subdivision: Bahama
Terrace
Features: Beach access,
Canal Front, Dock
Waterfront
Boat Mooring
Across from a beautiful
white sand beach



Ina Simmons

Phone: (242)351-9081
inasimmons@gmail.com



\$125,000 ID# 8136 [View Online](#)
www.sarlesrealty.com