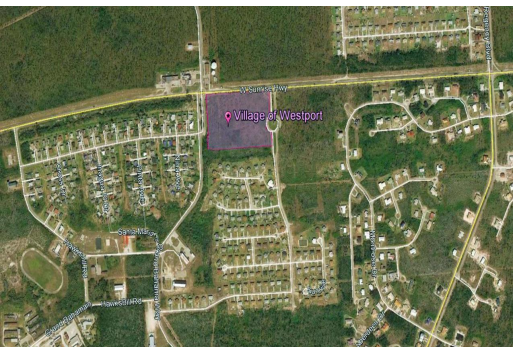


VILLAGE OF WESTPORT, Freeport, Grand Bahama/Freeport



Fantastic development opportunity! "Village of Westport" situated directly on Sunrise...

Fantastic development opportunity! "Village of Westport" situated directly on Sunrise Highway at the front of Sunrise Subdivision and comprises 16 single family lots which total approximately 378,588 square feet or 8.69 Acres in size. Each lot is zoned single family and is between 22,719 square feet and 30,000 square feet in size providing ideal homesites for middle income housing. Benefit from close proximity to the International Airport, Harbour and all amenities Grand Bahama has to offer. Full utilities including power, cable, internet, water and telephone are available to the land. Lots 1-7 are approximately 22,719 square feet. Lot 8 is approximately 30,097 square feet. Lots 15-21 are approximately 22,719 square feet. Lot 22 is approximately 30,005 square feet. Owner is motivated, call...read more on our website.

Bedrooms: 0
Bathrooms: 0
Lot Size: 378536
Subdivision: Freeport
Features: Easy Access, Family Oriented, Highway Access, None, Pets Allowed, Quiet Area, Recreation Nearby, Road - Paved, Shopping Nearby, Treed Lot

VILLAGE OF WESTPORT,
Freeport, Grand
Bahama/Freeport
Phone:



\$250,000 ID# M57690 [View Online](#)
www.sarlesrealty.com