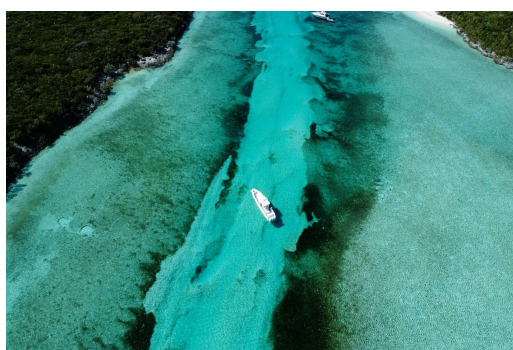
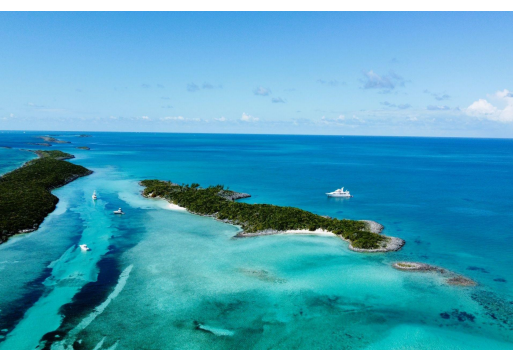
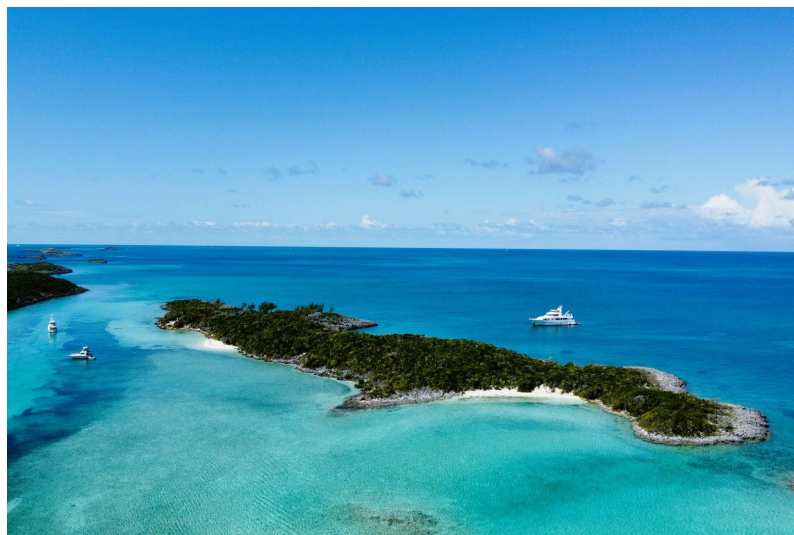
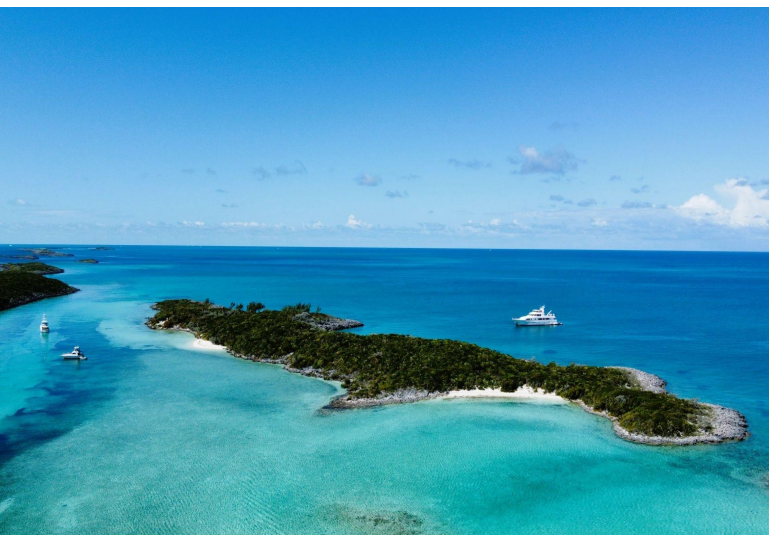


ROBERTS CAY, Other Exuma, Exuma & Exuma Cays



Roberts Cay is a fabulous Private Island located in the northern chain of the Exuma Cays....

Roberts Cay is a fabulous Private Island located in the northern chain of the Exuma Cays. Comprising 12 acres of lush green vegetation, 2 white sandy beaches, a protected harbour, and approximately 32 ft elevation. The Cay is surrounded by crystal clear turquoise waters, which provide the ideal location for snorkeling on the harbour side and deep-sea fishing off the Eastern Side of the Cay. Located approximately 28 miles Southeast of Nassau, half a mile south of Ship Channel Cay and conveniently within close proximity to Norman's and Highbourne Cay. Ideal to create your own private oasis....read more on our website.

Bedrooms: 0

Bathrooms: 0

Lot Size: 522720

Subdivision: Other Exuma Exuma & Exuma Cays

Features: Acreage, Beach

Front, None, Private

Island, View - Ocean,

Waterfront - Ocean

ROBERTS CAY, Other Exuma,
Exuma & Exuma Cays
Phone:



\$5.250,000 ID# M57701 [View Online](#)
www.sarlesrealty.com