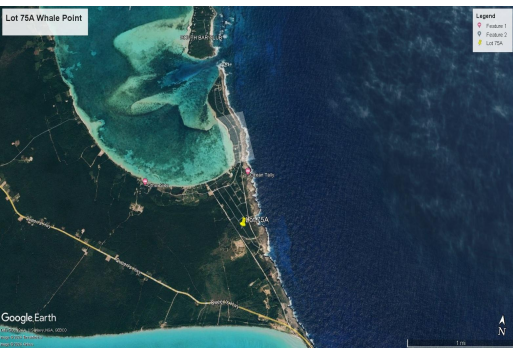
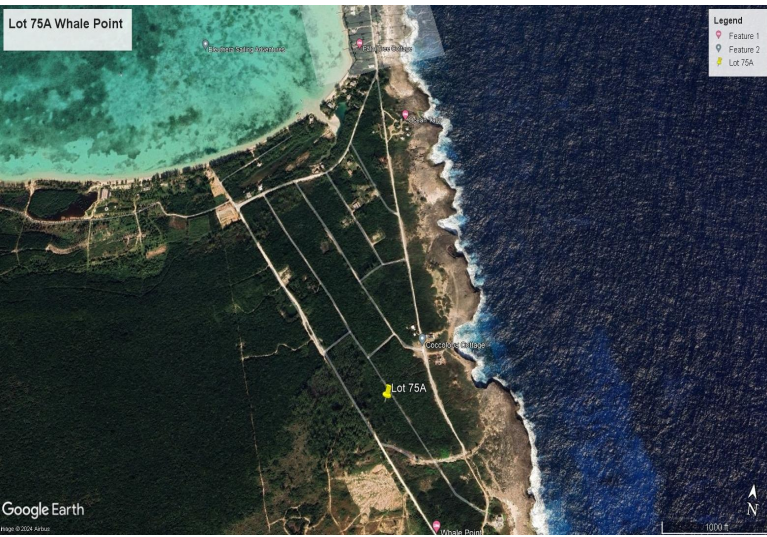


WHALE POINT, Whale Point, Eleuthera



This beautiful-wooded lot is located on Angel Fish Ave, 5 minutes from the Queens Highway and Glass...

This beautiful-wooded lot is located on Angel Fish Ave, 5 minutes from the Queens Highway and Glass Window Bridge in Whale Point, a unique peninsular development in North Eleuthera. This property offers 14,500 square feet of native Bahamian coppice in a community of homes with Deeded Beach access. Whale Point is located just 20 minutes from North Eleuthera airport, and only 5 minutes to Harbour Island by boat! Call today for more information on this investment opportunity located in the most sought-after area in Eleuthera that is priced right!...read more on our website.

Bedrooms: 0
Bathrooms: 0
Lot Size: 12000
Subdivision: Whale Point
Features: None

WHALE POINT, Whale Point,
Eleuthera
Phone:



\$30,000 ID# M57722 View Online
www.sarlesrealty.com