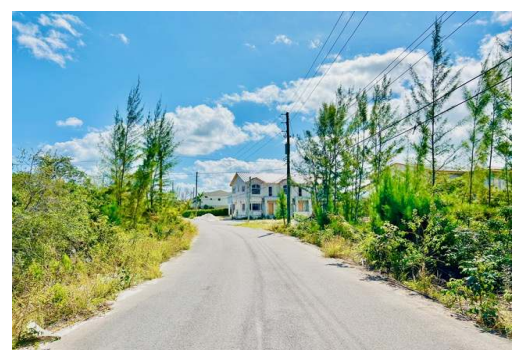
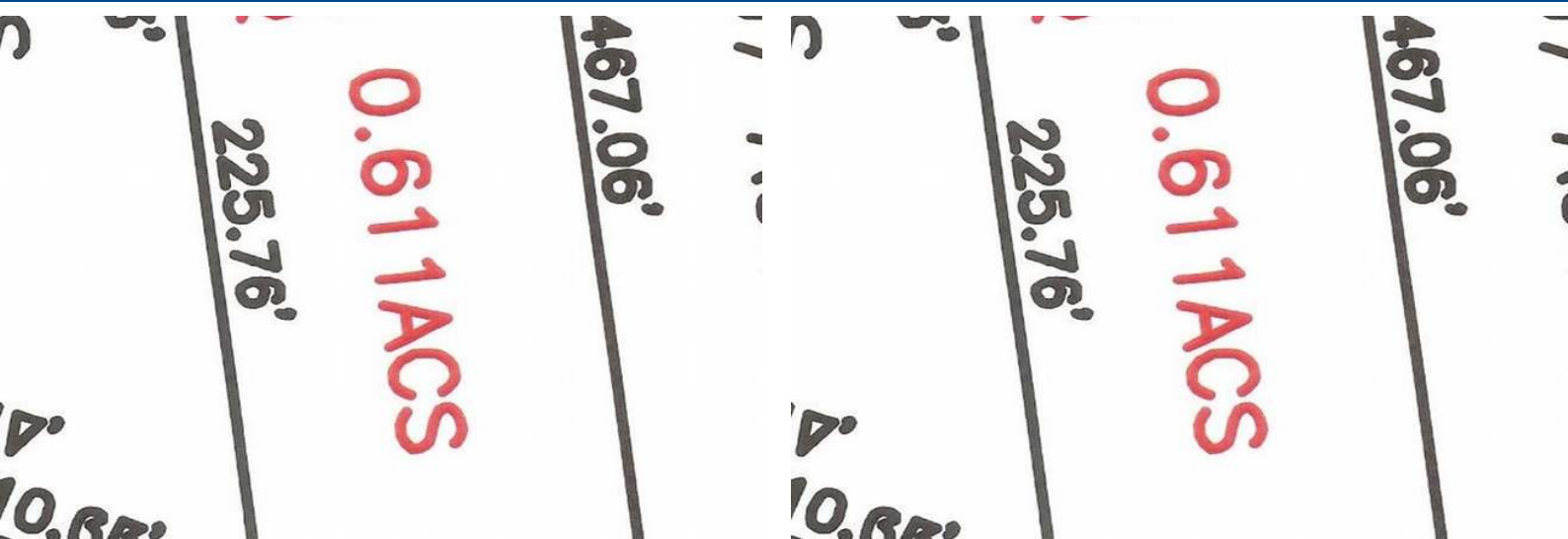


28B LOVE ESTATES, Love Beach, New Providence/Paradise



Single Family Lot #28B in Love Estates stands out as the premier destination in the western...

Single Family Lot #28B in Love Estates stands out as the premier destination in the western district of Nassau, Bahamas, offering the best-priced and largest selection of generously sized lots. Nestled at the heart of numerous developments, residents benefit from easy access to a variety of amenities, such as Entertainment, Beaches, Schools, and Shopping. With its unbeatable value and convenience, Love Estates is the perfect choice for families and investors seeking an exceptional living experience in a thriving neighborhood....read more on our website.

Bedrooms: 0

Bathrooms: 0

Lot Size: 26615

Subdivision: Love Beach

Features: None

LOT #28B LOVE ESTATES, Love

Beach, New Providence/Paradise

Island

Phone:



\$351.318 ID# M57504 [View Online](#)
www.sarlesrealty.com