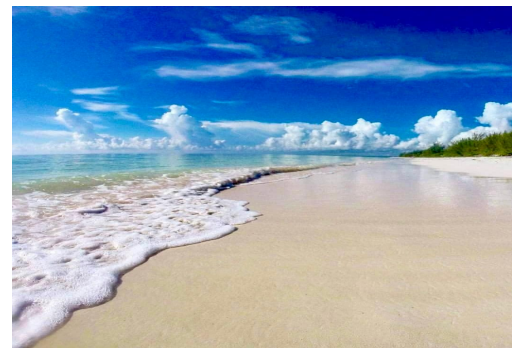
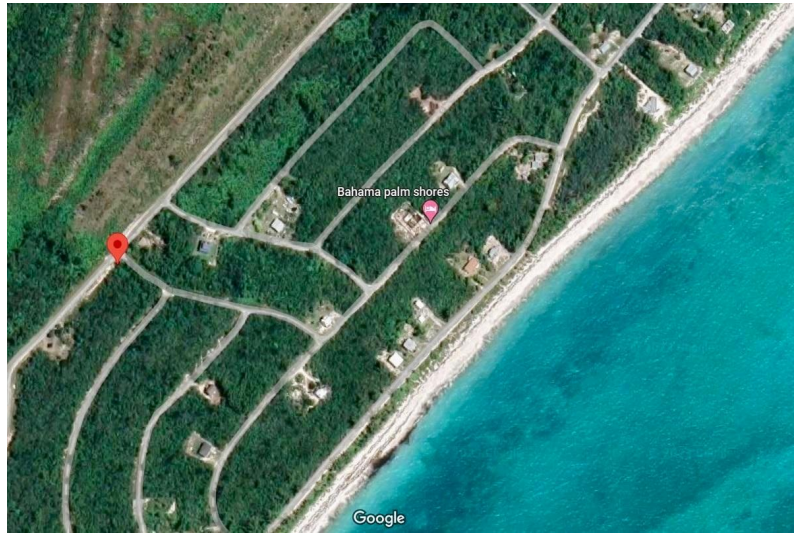
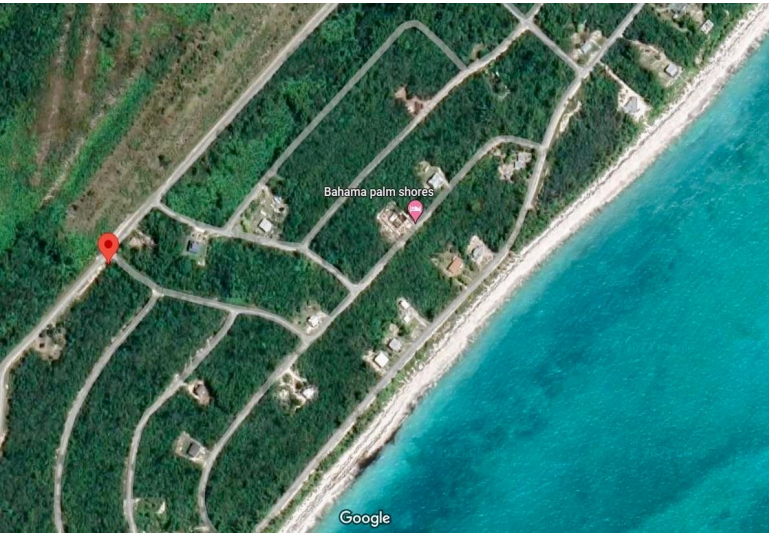


Lot 44 BAHAMA PALM SHORES, Bahama Palm Shores, Abaco



Bahama Palm Shores is the ideal property to build your dream home or Vacation income property with...

Bahama Palm Shores is the ideal property to build your dream home or Vacation income property with minimum investment! This 11,823sqft corner lot is just a few minutes walk to the beach and only a 20 minute drive from Marsh Harbour International Airport and Down Town Marsh Harbour! This quiet, family oriented neighborhood boasts its own Fire house for safety, access to an 8 mile long beach and is visited yearly by a flock of the rare and famous Bahama Parrots! This is Island living at its best!...read more on our website.

Bedrooms: 0
Bathrooms: 0
Lot Size: 11823
Subdivision: Bahama Palm Shores
Features: None

Lot 44 BAHAMA PALM SHORES,
Bahama Palm Shores, Abaco
Phone:



\$29,000 ID# M57806 [View Online](#)
www.sarlesrealty.com