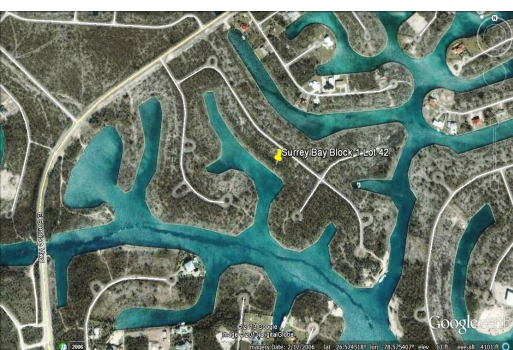
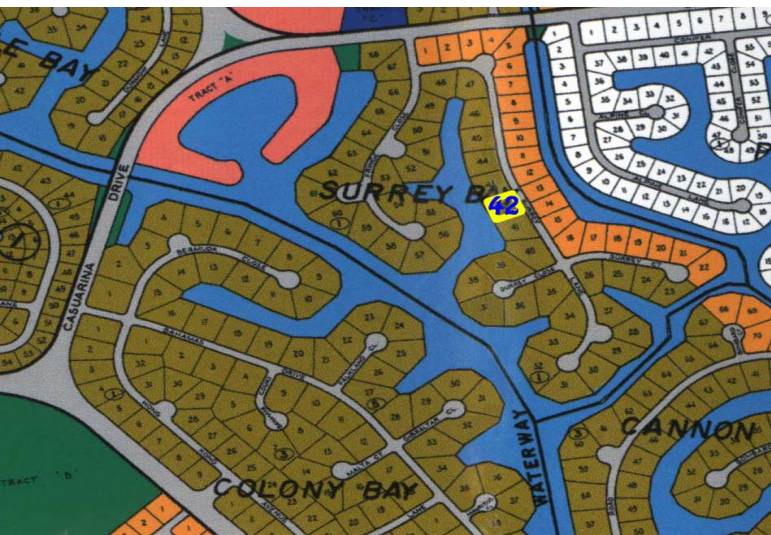


#42 Surrey Bay Canal Front



Excellent Priced Multi-Family High-Rice Canal Property

Located in Surrey Bay Subdivision just off of the Casuarina Bridge lot 42 is measured at 29,964 square feet with over 230 ft. of Prime canal frontage. Situated right on The Grand Lucayan Water Way this lot offers great southern waterway views and is within 15 minutes of Port Lucaya Market Place.

...read more on our website.

Lot Size: 33,000 sq ft
Maint. Fees: Service
Charges are \$300 a year.
Subdivision: Surrey Bay
Features: Canal Front
200' on the Canal



Tiffany Smith

Phone: (242) 351-9081

kekris4@gmail.com



\$160,000 ID# 7982 [View Online](#)
www.sarlesrealty.com

Ph: (242) 351-9081 | Web: www.sarlesrealty.com