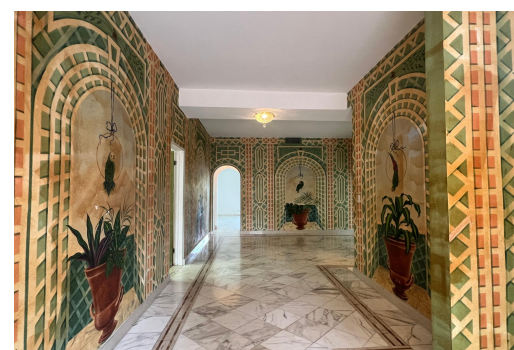


# CLOISTER DRIVE, Paradise Island, New Providence/Paradise



## PARADISE ISLAND WATERFRONT 4 STORY HOME A 4 story mansion of a family home, boasting 5 bedrooms, 6...

PARADISE ISLAND WATERFRONT 4 STORY HOME A 4 story mansion of a family home, boasting 5 bedrooms, 6 ½ baths, located at the south western end of the San Marino complex. So very special a property and the only San Marino building that is a single home. Boasting magnificent views from each of its 3 balconies, looking out over the sparkling waters of the Harbour. Upon the gracious entry at the main floor, a generous foyer, polished hard wood staircase leading to an office, a large kitchen and service area, marble floored dining and living room that flow onto the patio. The second story is a large den flanked by two full suites and a laundry room. The third story, the top suite is a spectacular large bedroom with a beautiful large bath with his and hers walk-in closet in cedar. The ground leve...read more on our website.

Bedrooms: 5

Bathrooms: 6

Lot Size: 5930

Subdivision: Paradise Island

Features: Dock,

Waterfront - Ocean

#5 CLOISTER DRIVE, Paradise Island, New Providence/Paradise Island

Island

Phone:



**\$3.250,000 ID# M58071** [View Online](#)  
[www.sarlesrealty.com](http://www.sarlesrealty.com)