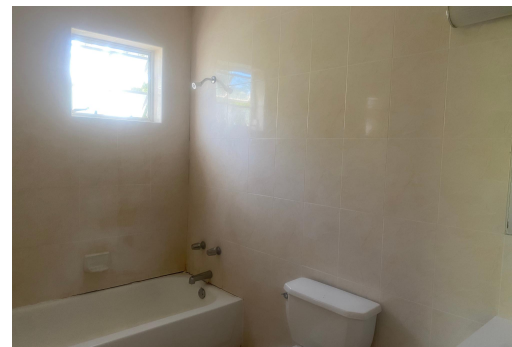


VENICE BAY ANNEX, Bacardi Road, New Providence/Paradise



The condo unit is very spacious and has ample storage space. Each bedroom has its own en-suite...

The condo unit is very spacious and has ample storage space. Each bedroom has its own en-suite bathroom. The unit is a great investment as a rental property, or perfect as a starter home within a quiet community...read more on our website.

Bedrooms: 2
Bathrooms: 2
Lot Size: 10179
Subdivision: Bacardi Road
Features: No Thru Road,
Road - Paved,
Unfurnished

VENICE BAY ANNEX, Bacardi
Road, New Providence/Paradise
Island
Phone:



\$250,000 ID# M58147 [View Online](#)
www.sarlesrealty.com