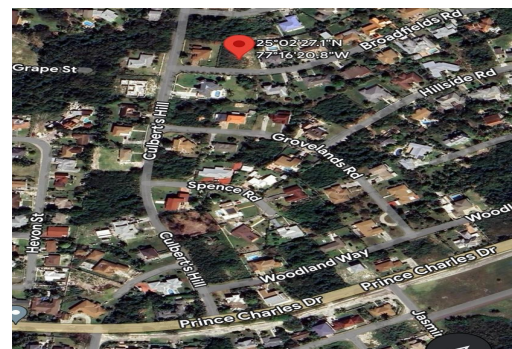
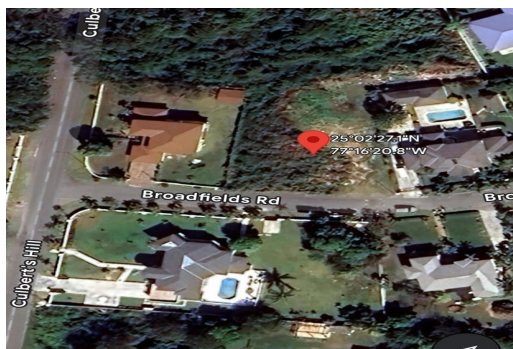


BROADFIELDS ROAD, Winton, New Providence/Paradise Is



Discover the perfect canvas for your dream home in prestigious Winton Heights. This spacious 15,729...

Discover the perfect canvas for your dream home in prestigious Winton Heights. This spacious 15,729 sqft lot offers a rare opportunity in an established, upscale neighborhood. With all utilities conveniently underground, envision your ideal residence surrounded by hilltop luxury homes. Enjoy a tranquil, family-oriented atmosphere near private and public schools, essential amenities, grocers, banks and Palm Cay Marina. Seize this chance to craft a bespoke lifestyle in a coveted location—an exceptional investment opportunity awaits!...read more on our website.

Bedrooms: 0
Bathrooms: 0
Lot Size: 15729
Subdivision: Winton
Features: Easy Access,
Family Oriented, Marina
Nearby, None, Quiet
Area, Recreation Nearby,
Road - Paved, Shopping
Nearby

16 BROADFIELDS ROAD,
Winton, New
Providence/Paradise Island
Phone:



\$220,000 ID# M58219 [View Online](#)
www.sarlesrealty.com