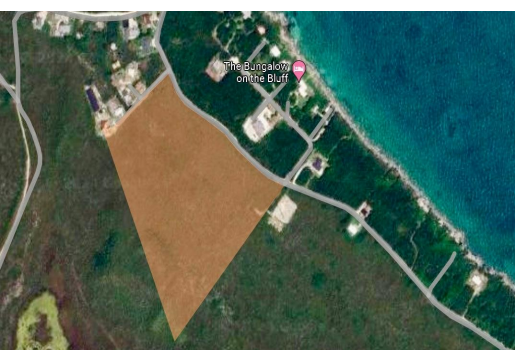
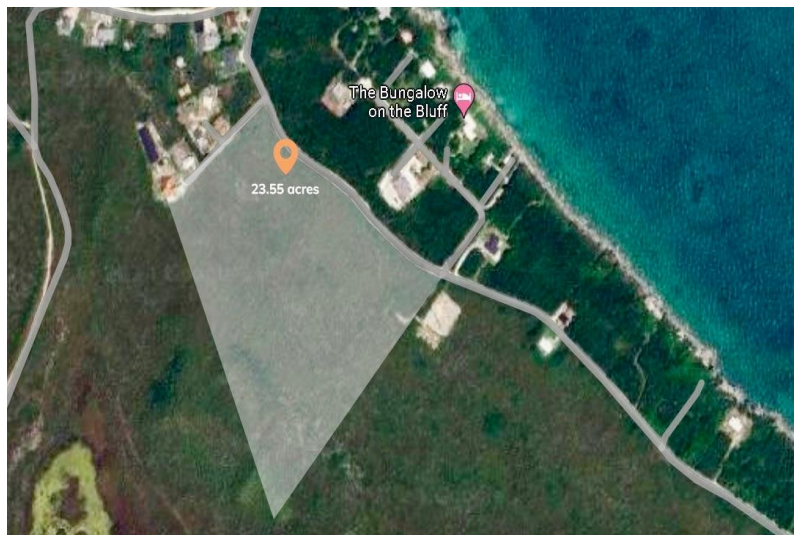
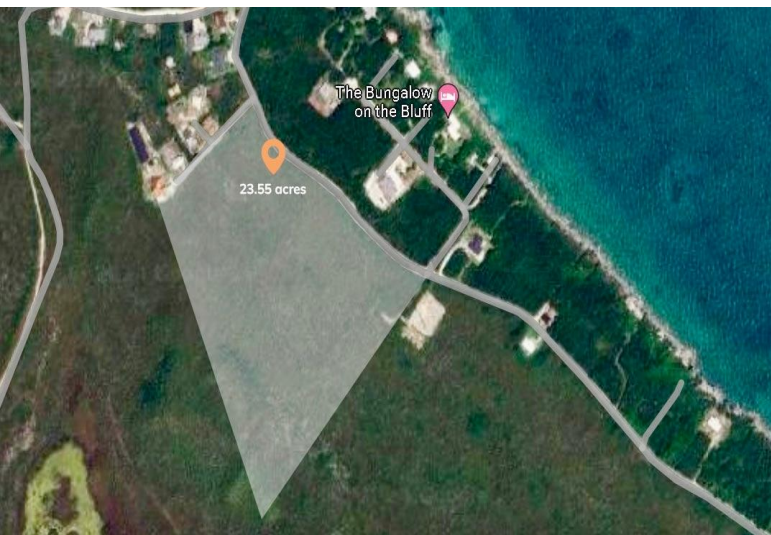


GREAT CISTERN, ABACO, Marsh Harbour, Abaco



Calling All Developers!!!! Being offered is 23.55 acres of high elevated land reaching up to 80ft...

Calling All Developers!!!! Being offered is 23.55 acres of high elevated land reaching up to 80ft above sea level. These elevations provide ocean views and onshore breezes. These lots are Located in Great Cistern on the main land of Great Abaco and only a 10 minute drive from Marsh Harbour's International airport. Great Cistern is a quite and safe area and located in close proximity to school, grocery stores, restaurants and other amenities. The is a current shortage of housing on Great Abaco and with a purchase price of \$1.30/sqft this property is a huge investment opportunity and a developers dream. This property has already been surveyed for a gated community with single family lots and comes with the sale or can be divided or resurveyed and designed as you wish....read more on our website.

Bedrooms: 0
Bathrooms: 0
Lot Size: 1025838
Subdivision: Marsh Harbour
Features: None

GREAT CISTERN, ABACO,
Marsh Harbour, Abaco
Phone:



\$1,500,000 ID# M58230 [View Online](#)
www.sarlesrealty.com