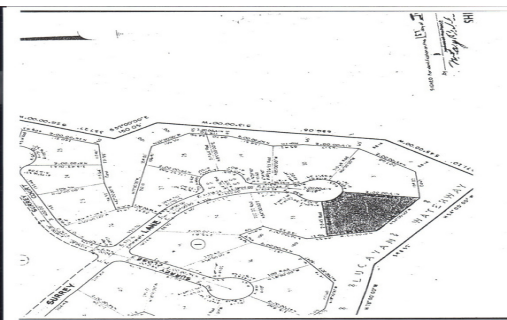
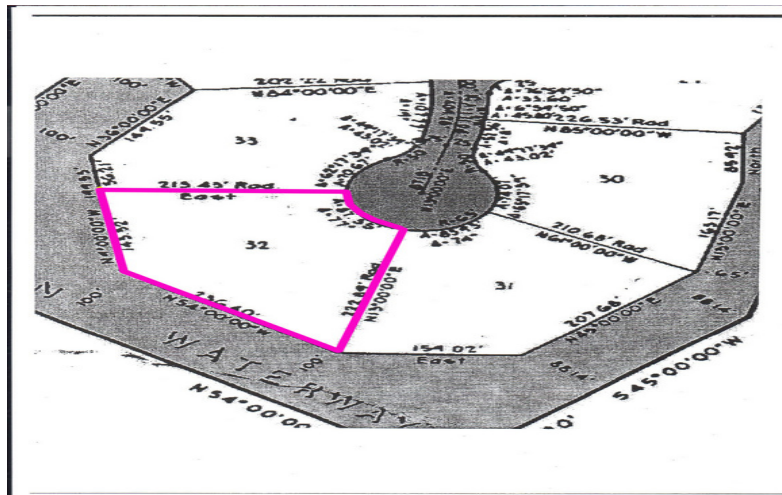
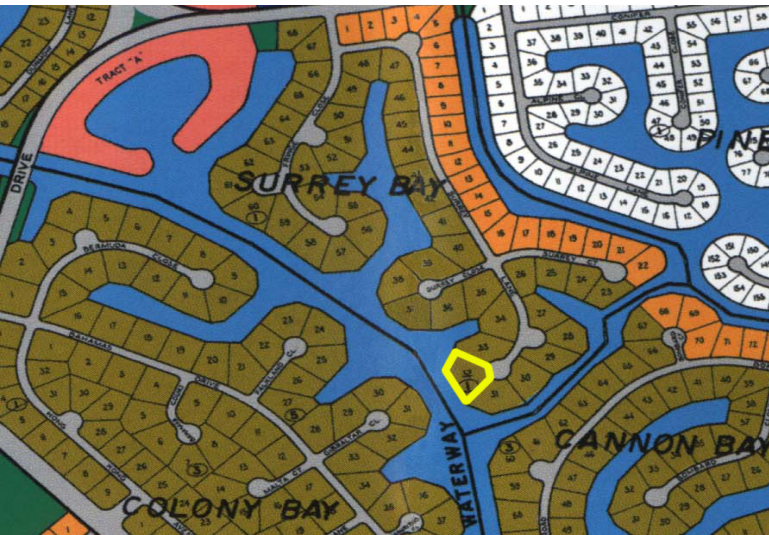


# Exquisite Canal Front Land



**REDUCED FROM 185,000!**  
**Incredible value, huge waterfront!**

This exclusively listed property presents a rare opportunity to own a sought after high rise multi family zoned land for great value! Located in the Grand Lucayan Waterway Surrey Bay waterfront properties feature over sized lots, perfect for development of cottages and condominiums, incredible 380 feet of perfect seawall could boast quite significant number of boat slips; yet the land could also be home for a large estate. The land is facing west/ south west, enabling to enjoy spectacular sunsets. Wide canals and location on the east side of Casuarina bridge ensures easy access by boat, even by a sailing vessel with no height restrictions unlike other Grand Lucayan Waterway properties. Recent years have shown extraordinary development growth in the waterway area. Downtown, shopping, resta...read more on our website.

Lot Size: 48,000 sq. ft.  
Maint. Fees: \$350  
annually  
Subdivision: Surrey Bay  
Features: Canal Front  
Facing west/ south- west  
Beautiful sunsets  
High rise multi family  
zoning



Ina Simmons

Phone: (242)351-9081  
inasimmons@gmail.com



**\$125,000 ID# 7613** [View Online](#)  
[www.sarlesrealty.com](http://www.sarlesrealty.com)