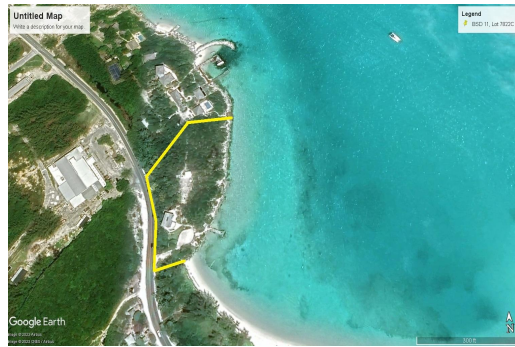


# JOLLY HALL LOT B, George Town, Exuma &#038; Exuma C



## A parcel of land with an area of 22,275 Sq. Ft. and with 410 feet of rocky shoreline, and 268 feet...

A parcel of land with an area of 22,275 Sq. Ft. and with 410 feet of rocky shoreline, and 268 feet on the Queens Highway in the Jolly Hall area close to George Town. The land is best suited to residential development. George Town is the capital of The Exumas, and where most of the amenities are located: Government building with Post Office, Police Station, and Administrator's office. Hotels, restaurants and bars, car and scooter rentals, water taxis, marina, and boutiques to name a few....read more on our website.

Bedrooms: 0  
Bathrooms: 0  
Lot Size: 21206  
Subdivision: George Town  
Features: None, Rocky Shore, View - Ocean,  
Waterfront - Ocean

JOLLY HALL LOT B, George Town, Exuma &#038; Exuma Cays  
Phone:



**\$1,300,000 ID# M57570** [View Online](#)  
[www.sarlesrealty.com](http://www.sarlesrealty.com)