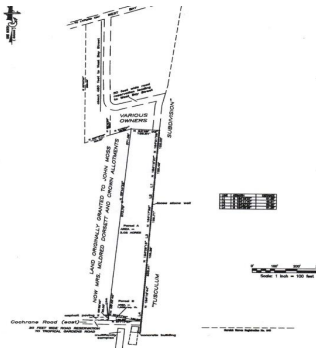


# TROPICAL GARDENS, West Bay Street, New Providence/Paradise Island



**With direct access from West Bay Street, this 3 acre parcel of land is in a prime location for...**

With direct access from West Bay Street, this 3 acre parcel of land is in a prime location for further development. The land can be split into multiple lots with individual houses or blocks of condominiums can be constructed. A rare opportunity to find a parcel of this size with this unique development potential within West Nassau....read more on our website.

Bedrooms: 0  
Bathrooms: 0  
Lot Size: 131551  
Subdivision: West Bay Street  
Features: None

PARCEL 1 TROPICAL GARDENS, West Bay Street, New Providence/Paradise Island  
Phone:



**\$1.295,000 ID# M52254 [View Online](#)**  
**[www.sarlesrealty.com](http://www.sarlesrealty.com)**