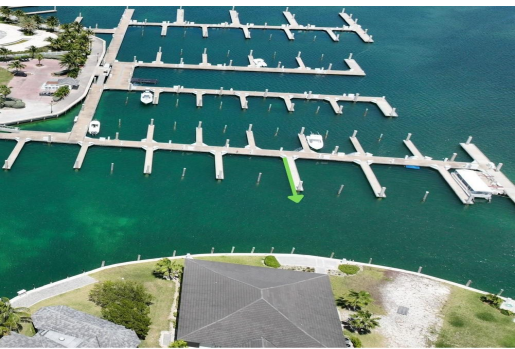


# BIMINI BAY MEGA MARINA, North Bimini, Bimini



## The Bimini Bay Mega Marina is a luxury mega-yacht marina just off the coast of Florida, with all...

The Bimini Bay Mega Marina is a luxury mega-yacht marina just off the coast of Florida, with all the pleasures of The Bahamas. This marina is an official port of entry into The Islands of The Bahamas, offering Customs and Immigration to make your entry process easy and convenient. This slip Inagua #15, is a 60ft marina slip located at the Bimini Bay Mega Marina at the Hilton Hotel. As an investment, these slips rent for an average of \$5.30 per ft. per day with a minimum charge of 40ft. The monthly dues on Inagua #15 are approximately \$550.00 inclusive of taxes. These floating docks are in a protected area, perfect for boaters who may want to stay for a few hours, overnight or for an entire season. You can walk right up to the resort's main amenities which include the lagoon-style pool, c...read more on our website.

Bedrooms: 0  
Bathrooms: 0  
Lot Size: 60  
Subdivision: North Bimini  
Features: 24 Hour Security, Canal Front, Central location, Dock, Easy Access, Gated Community, Marina Nearby, Swimming Pool, View - Ocean, Waterfront - Ocean

BIMINI BAY MEGA MARINA,  
North Bimini, Bimini  
Phone:



**\$195,000 ID# M57316** [View Online](#)  
[www.sarlesrealty.com](http://www.sarlesrealty.com)