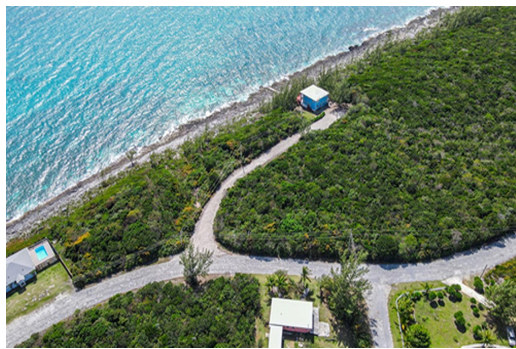
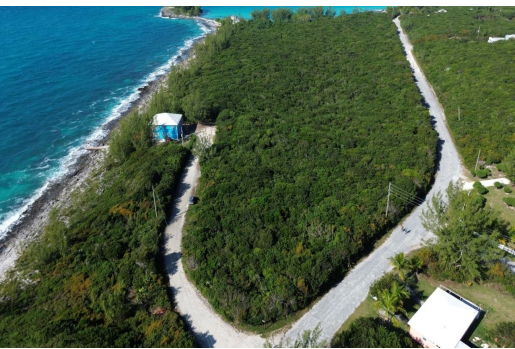
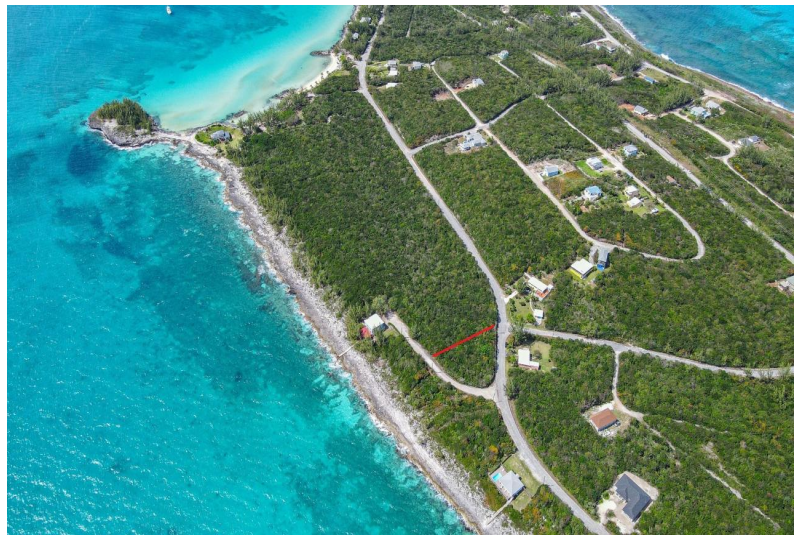
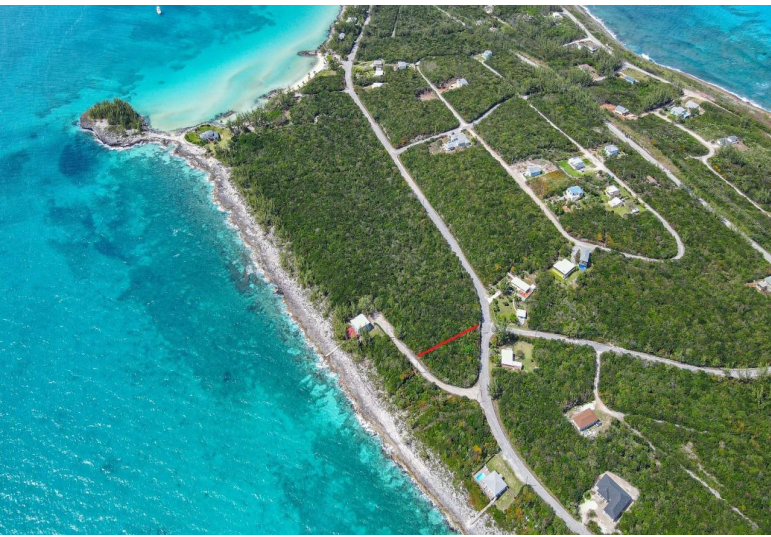


LOT 1 SAYLE POINT ESTATES, Rainbow Bay, Eleuthera



An incredible opportunity to buy an acre of land close to one of the most popular beaches on the...

An incredible opportunity to buy an acre of land close to one of the most popular beaches on the island! Build your vacation home or homes on Wandering Shore drive, a few yards from the caribbean side, with extraordinary sunsets and fresh cooling breezes. Sit on the porch and relax, or walk to the beach to swim and snorkel. Flat and easy to build on, the long rounded shape of the lot facing the ocean is most conducive to building cottages to take advantage of the sea views and to ensure privacy. Rainbow Bay is a beautiful sub division with several beaches, tennis courts and a boat ramp and is a great location for exploring the island. The Rainbow Inn serves home made pizza and is a well known restaurant for fine dining With an airport [Governors Harbour] only a 15 minute drive to the south...read more on our website.

Bedrooms: 0

Bathrooms: 0

Lot Size: 44000

Subdivision: Rainbow Bay

Features: Family Oriented,

None, Pets Allowed,

Quiet Area, Road -

Paved, Treed Lot, View -

Ocean

LOT 1 SAYLE POINT ESTATES,

Rainbow Bay, Eleuthera

Phone:



\$85,000 ID# M56745 [View Online](#)
www.sarlesrealty.com