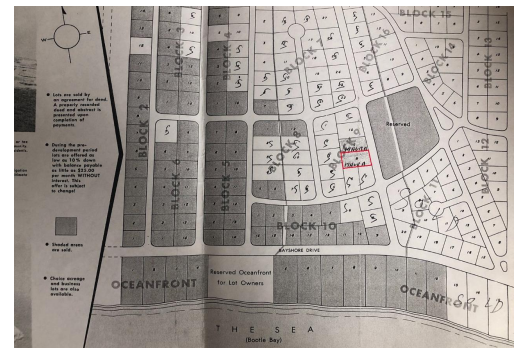
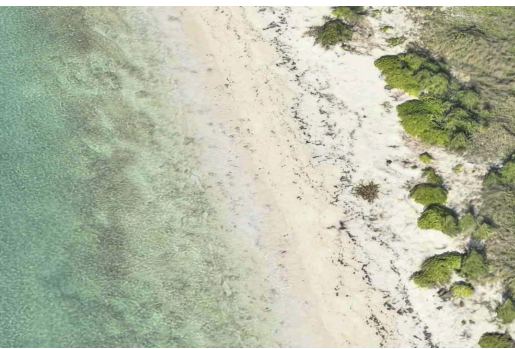


# BOOTLE BAY VILLAGE, Bootle Bay, Grand Bahama/Freepo



**This fabulous home site in Bootle Bay is a quick walk (600 feet) from the neighbourhood beach....**

This fabulous home site in Bootle Bay is a quick walk (600 feet) from the neighbourhood beach. Build your home in this quaint community near to West End on Grand Bahama! This is an ideal location for boaters, near to 2 marinas and not far from Florida. Holiday makers can enjoy nearby Paradise Cove and a leisurely drive into Freeport for restaurants, banking, tours and shopping to name a few....read more on our website.

Bedrooms: 0  
 Bathrooms: 0  
 Lot Size: 10650  
 Subdivision: Bootle Bay  
 Features: Family Oriented,  
 Highway Access, Marina  
 Nearby, None, Pets  
 Allowed, Quiet Area,  
 Road - Paved, Treed Lot

BOOTLE BAY VILLAGE, Bootle Bay, Grand Bahama/Freepo  
 Phone:



**\$25,000 ID# M57003** [View Online](#)  
[www.sarlesrealty.com](http://www.sarlesrealty.com)