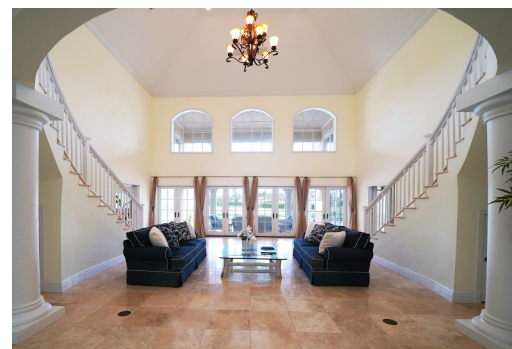
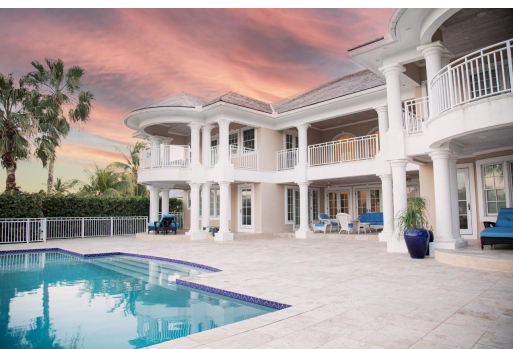


PARADISE ISLAND DRIVE, Paradise Island, New Providence/Paradise Island



Ascot House, resting upon half an acre, offers an awe-inspiring panorama of the golf course against...

Ascot House, resting upon half an acre, offers an awe-inspiring panorama of the golf course against an ocean backdrop. This colonial-style gem harmonizes indoor charm with tropical allure. Its grandeur is evident in oversized balconies and expansive windows that flood the interiors with natural light, uniting the home with the lush outdoors. Upon entry, you're greeted by a stunning formal sitting area, framed by graceful double staircases that lead your gaze to the infinity pool beyond. This remarkable 6-bed, 6.5-bath residence is perfect for a large family or avid entertainers. The spacious family and dining rooms, connected to an open-plan kitchen, evoke warmth and hospitality, ideal for memorable gatherings. Adding to its allure, Ascot boasts a detached guest house with a private entry ...read more on our website.

Bedrooms: 6
Bathrooms: 6
Lot Size: 30000
Subdivision: Paradise Island
Features: 24 Hour Security, Central location, Family Oriented, Furnished, Garden Area, Gated Community, Golf Course Dev, Guest House, Impact Windows, Jetted Bathtub, Main Level Entry, Marina Nearby, Night Security, Private Setting, Quiet Area, Shopping Nearby, Sprinkler System, Stand-by Generator, Swimming Pool, View - Ocean, Waterfront - Lake, Waterfront - Ocean

PARADISE ISLAND DRIVE,
Paradise Island, New
Providence/Paradise Island
Phone:



\$4,500,000 ID# M55566 [View Online](#)
www.sarlesrealty.com