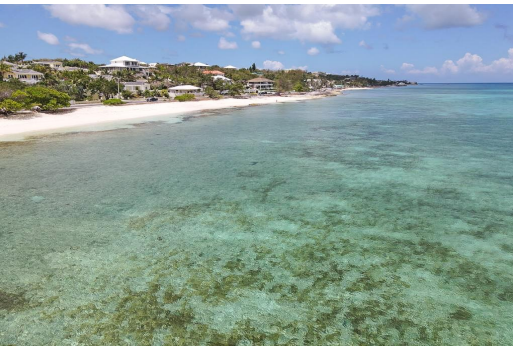
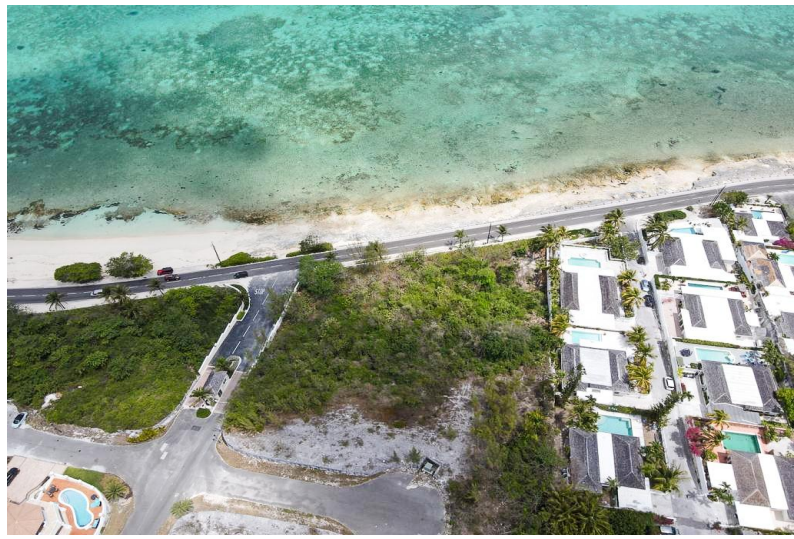
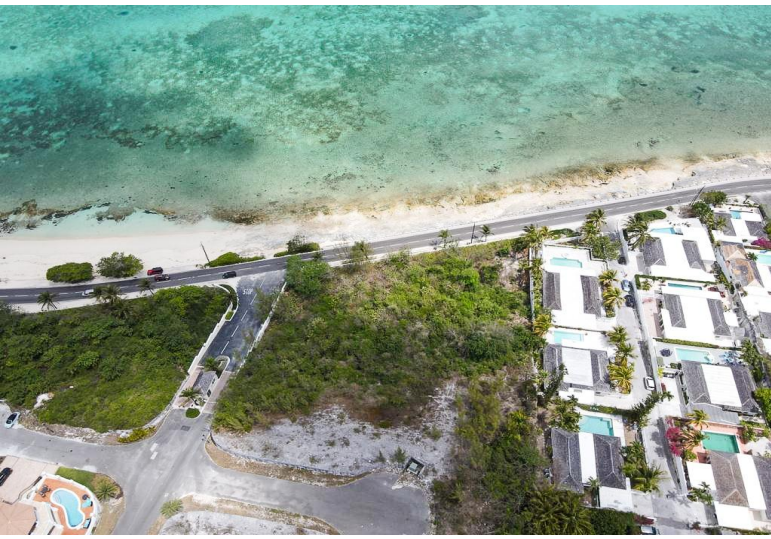


SAFFRON HILL, West Bay Street, New Providence/Paradise Island



Over half an acre in size, this is the largest lot in the gated community of Saffron Hill. The...

Over half an acre in size, this is the largest lot in the gated community of Saffron Hill. The hillside property offers stunning unobstructed views of the Atlantic Ocean, across from Orange Hill beach in Western New Providence. Amenities include 24 hour security, clubhouse with pool and (soon-to-be) heated spa, tennis court, basketball, and kids' playground. This prime West Bay Street location is convenient for schools, retail, a wide range of dining experiences and the international airport. With underground utilities already in place, this oceanview lot is ready for you to build your dream home!...read more on our website.

Bedrooms: 0
Bathrooms: 0
Lot Size: 23115
Subdivision: West Bay Street
Features: 24 Hour Security, Beach Front, Can Be Rented, Cul-de-sac, Gated Community, Golf Course Nearby, Hillside, View - Ocean

SAFFRON HILL, West Bay Street, New Providence/Paradise Island
Phone:



\$860.000 ID# M56375 [View Online](#)
www.sarlesrealty.com