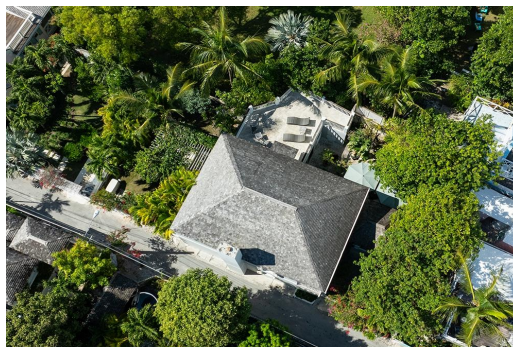


# OLEANDER, Harbour Island, Eleuthera



## Oleander, an historic coral house that was once a sugar mill, enjoys unusual privacy thanks to its...

Oleander, an historic coral house that was once a sugar mill, enjoys unusual privacy thanks to its walled courtyard gardens off pretty Crown Street. Convenient to restaurants and shopping, it offers large airy rooms and private outdoor areas. The spacious living room and dining area open to a pergola-covered patio surrounded by lush tropical plants. The well-equipped kitchen opens on to a second courtyard patio with a breakfast table for outdoor meals. The main floor master bedroom has a King size bed, a 3 piece bathroom and patio doors opening onto the private leafy courtyard. A open spiral staircase leads to a second bedroom with 2 oversized twin beds and a large ensuite bathroom. This bedroom opens onto a covered porch which overlooks the garden and historic village and is perfect for c...read more on our website.

Bedrooms: 2  
Bathrooms: 2  
Lot Size: 4200  
Subdivision: Harbour Island  
Features: Cable, Fully Fenced, Furnished, Garden Area, Impact Shutters, Main Level Entry, Stand-by Generator

OLEANDER, Harbour Island,  
Eleuthera  
Phone:



**\$2,300,000 ID# M56629** [View Online](#)  
[www.sarlesrealty.com](http://www.sarlesrealty.com)