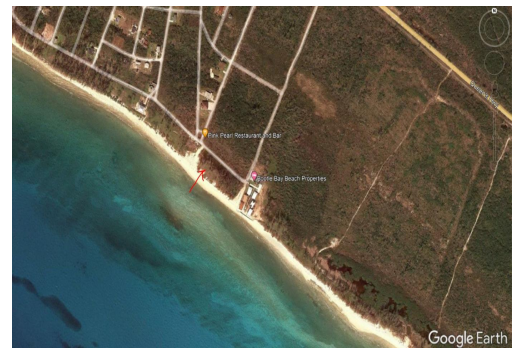


Amazing Bootle Bay Beachfront Land



100 linear feet on the Ocean!!! This is the perfect place to build your little piece of heaven. Or a

This beachfront lot in Bootle Bay local community fronts a gorgeous white sand beach. There are low and high spots so some fill may be needed before building. The utilities are in place and there are homes and a restaurant very nearby. Because of OPEN ZONING you can build your private retreat, a beach house just for you and your family or turn it into an income producer and rent it short term to vacationers. A reserve or park area where no one can build is just one lot away. Don't miss this opportunity....read more on our website.

Bedrooms: Multi Family
Estate
Bathrooms: 1
Lot Size: 20000
Maint. Fees: Property tax
\$1,805/ annually
Subdivision: West End /
West Grand Bahama
Features: Beach access,
Ocean front
beach front in developing
area
Open zoning
45 minutes from the airport



Ina Simmons

Phone: (242)351-9081
inasimmons@gmail.com



\$165,000 ID# 5583 [View Online](#)
www.sarlesrealty.com