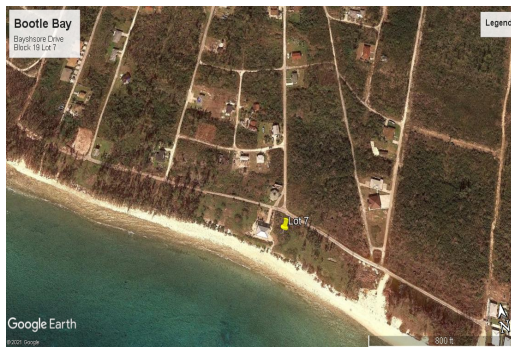
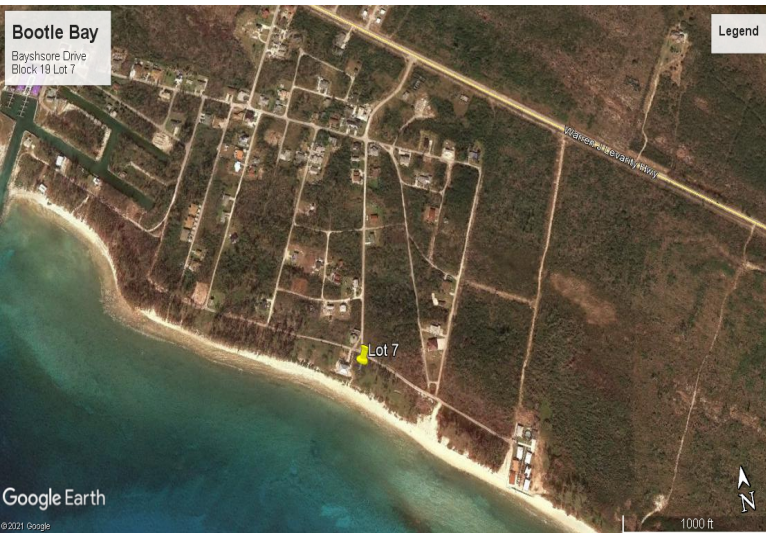


Bootle Bay Beachfront Land



Located along the shoreline in Bootle Bay, this beach front lot is ripe for development. Utilities

...read more on our website.

Lot Size: 20,400sqft
Maint. Fees: -
Subdivision: West End /
West Grand Bahama
Features: Beach access,
Ocean front
ocean front lot
slowly developing area
utilities in the area



James Sarles

Phone: (242) 351-9081

jamesarlesrealty@gmail.com



\$165,000 ID# 5574 View Online
www.sarlesrealty.com

Ph: (242) 351-9081 | Web: www.sarlesrealty.com