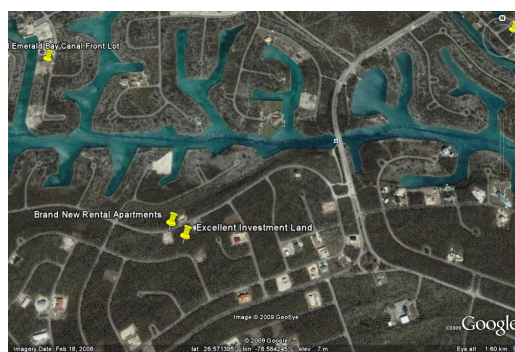
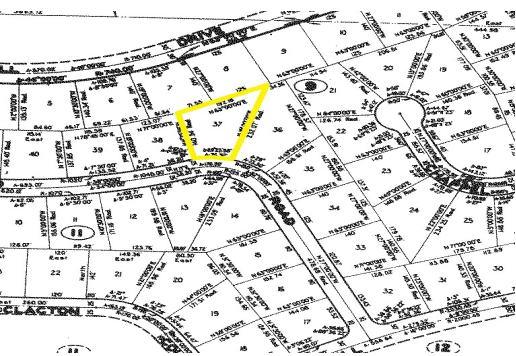
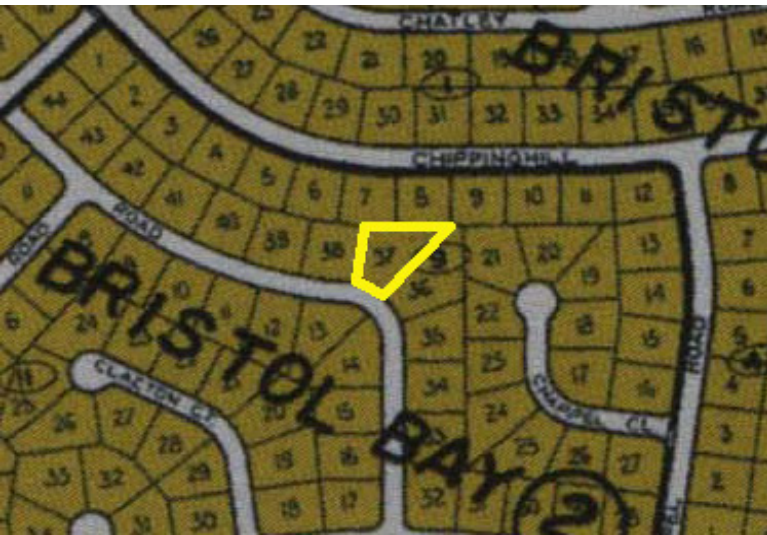


Nicely Priced High Rise Multi Family Land



Huge Lot compared to most lots in the area, and best priced too!

Zoned high rise multi- family and very reasonably priced this lot of land is a great investment. Zoning allows for anything from a single family home to a multi- story apartment complex. What makes this a great value is that similar lots have a greater price tag and are smaller in size! Located before the Casuarina bridge in a fast growing neighborhood this sizable Bristol Bay lot is very near the Grand Lucayan Waterway canal system. The sparkling waterway views would be spectacular, especially from a multi- level structure's upper floors. Downtown, shopping, white sandy beaches are just 10 to 15 minutes away. Make an offer today!...read more on our website.

Lot Size: 25098
Subdivision: Bristol Bay
larger than other lots in the
area
pie shaped land
developing area



Ina Simmons

Phone: (242)351-9081
inasimmons@gmail.com



\$42,000 ID# 5369 [View Online](#)
www.sarlesrealty.com