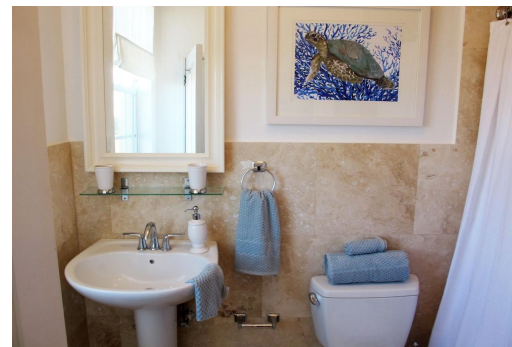
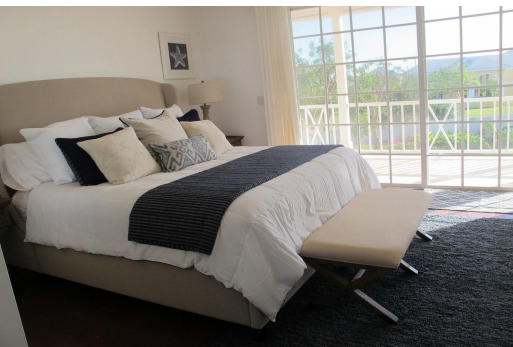
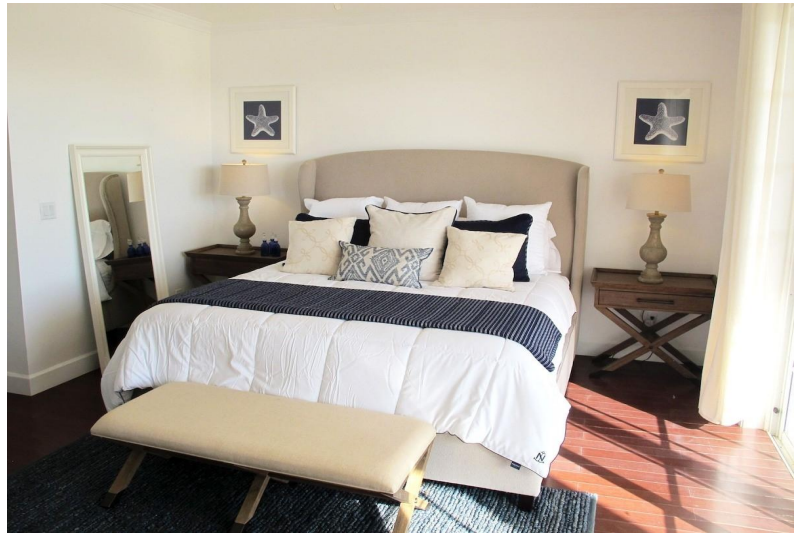


Condo in Yamacraw



Condo in New Providence/Paradise Island

Unit 102 Garden Building in Palm Cay, boasts a luxurious retreat within a gated community offering unparalleled views and amenities. Enjoy stunning 360-degree vistas of glorious sunrises and sunsets from the expansive patio and balconies, surrounded by exotic gardens and serene marina harbor views. Take a refreshing dip in the nearby Anchorage freshwater swimming pool, just steps away from your unit, or bask under the starlit sky. Convenience meets recreation with Garden Town's proximity to tennis courts, a children's playground, and a putting green area, all within a minute's walk. This unit includes an open concept living area with a modern and well-appointed kitchen. On the second floor, discover two bedrooms, including a King Master Bedroom with an en-suite bathroom and balcony offerin...read more on our website.

Bedrooms: 4
Bathrooms: 3
Lot Size: 2750
Living Area: 2750
Subdivision: Yamacraw
Features: Garden Area,
Kitchen Built-in(s), Main
Level Entry, Dock, Impact
Windows, Stand-by
Generator, 24 Hour
Security, Night Security,
Hurricane Windows, Short
Term Allowed



James Sarles

Phone: (242) 351-9081
info@sarlesrealty.com



\$775,000 ID# 52551 [View Online](#)
www.sarlesrealty.com