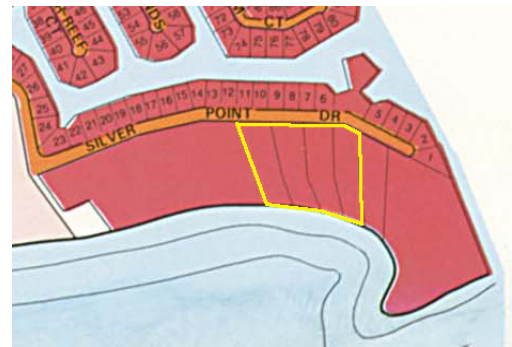
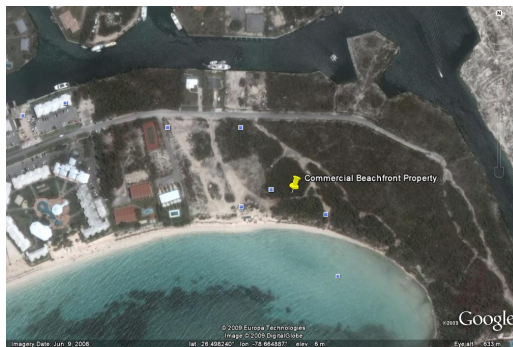
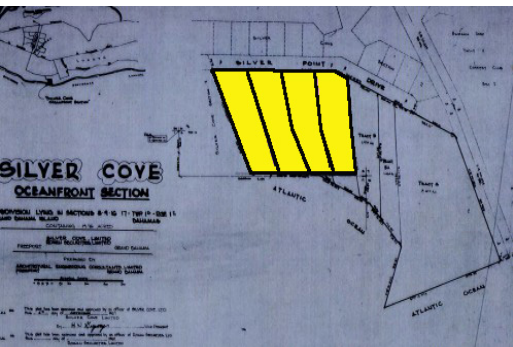
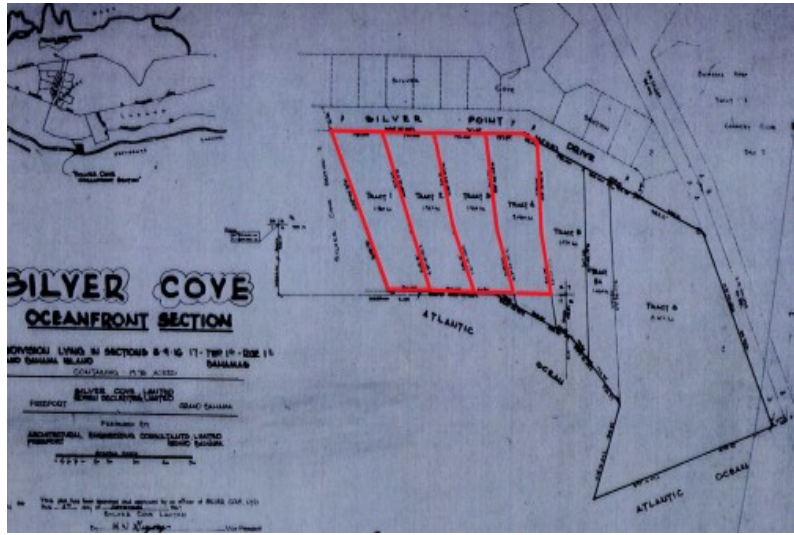


# Commercial Beachfront



## Attention Investors!

Located in a waterfront community of Silver Cove Subdivision near a popular Island Seas Resort this prime commercial oceanfront property features most beautiful sandy beach, crystal clear waters and is astounding 8 acres in size. Zoned Tourist Commercial, the property is ideal for the creation of a condominium development, small resort, seaside restaurant or even multiple spec homes. Tourist Commercial zoning is the highest zoning available and one of the rarest to find. Perfect opportunity for a developer! Centrally located within walking distance to the world famous Port Lucaya Marketplace, Marina and Casino and under 15 minutes from the Grand Bahama International and Domestic Airports, this is an investors dream, given its proximity to South Florida and their lack of Beach front land av...read more on our website.

- Lot Size: 8 acres
- Maint. Fees: \*
- Subdivision: Silver Cove
- Features: Beach access, Ocean front
- one of the most beautiful beaches
- tourist commercial zoning
- astounding 8 acres in size



Ina Simmons

Phone: (242)351-9081  
 inasimmons@gmail.com



**\$12,000,000 ID# 5222** [View Online](#)  
[www.sarlesrealty.com](http://www.sarlesrealty.com)