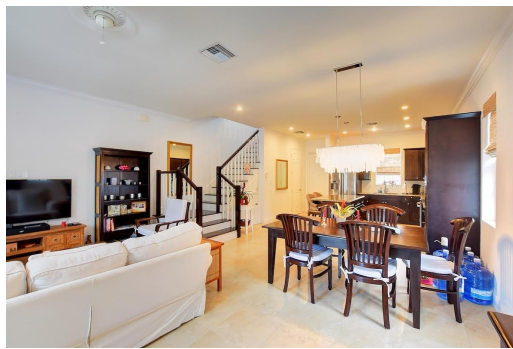
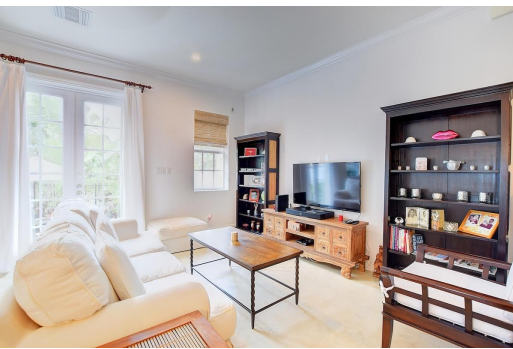


# Half Duplex in Prospect Ridge



## Half Duplex in New Providence/Paradise Island

This Balmoral 2 bed, 2 bath townhome has been tastefully decorated and well maintained. The unit features a central A/C system with smart thermostats, upgraded plumbing system with a pressure boost pump, and shares a standby generator with the adjacent unit 50. Each bedroom features an en-suite as well as a powder room adjacent to the kitchen. The unit is currently rented....read more on our website.

Bedrooms: 2  
Bathrooms: 3  
Lot Size: 1400  
Living Area: 1400  
Subdivision: Prospect Ridge  
Features: Garden Area, Kitchen Built-in(s), Impact Shutters, Roll Down Shutters, Cable, Stand-by Generator, 24 Hour Security, Night Security, Furnished



James Sarles

Phone: (242) 351-9081  
info@sarlesrealty.com



**\$625,000 ID# 52124** [View Online](#)  
[www.sarlesrealty.com](http://www.sarlesrealty.com)